

SEASON 1989/90 OFFICIAL MATCHDAY PROGRAMME OF



WEALDSTONE

FOOTBALL CLUB LIMITED

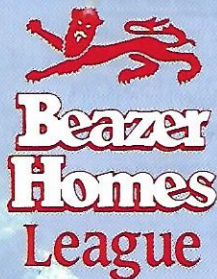
FOUNDED 1899



Wendy Fair
CAPITAL LEAGUE



CLUB SPONSORS



BEAZER HOMES PREMIER DIVISION

TUESDAY 22nd AUGUST 1989

v ASHFORD TOWN

KICK OFF 7.30 pm

60p

WEALDSTONE

FOOTBALL CLUB LIMITED

LOWER MEAD STADIUM, STATION ROAD, HARROW, MIDDX. HA1 2TU

Tel: 01-427 4064 (Answerphone after office hours) Fax: 01-863 7215

FOUNDED 1899

Directors:

A.J. CLIFTON, M.B.I.M. (*Chairman & Managing Director*)
P.B. BRAXTON (*Vice Chairman & Football Secretary*) J.E. FLETCHER
P.V. JACKSON, A.C.I.B. (*Company Secretary*) N.E. DUGARD, M.C.I.M.
F.B. BRADBURY P.W. KEELER, A.C.I.B. E.E. CLIFTON

Team Manager: TONY JENNINGS *Coach:* DENNIS BYATT *Physiotherapist:* TERRY WARREN

Medical Officer: DR. MARTIN ADLER *Press Relations Officer:* STEVE MARSHALL

Office Secretariat: JANICE CLADD *Club Statistician:* ROY COUCH

Programme Editor: STEVE MARSHALL

EDITORS NOTES

A very warm welcome to you all for our first Beazer Homes match at Lower Mead in this new campaign. Good evening to everyone from Ashford Town and I sincerely hope you enjoy your visit to Wealdstone.

Once again, there's plenty of new faces on the pitch, and I hope that many new supporters have come along tonight to witness the start of our last season at Lower Mead. It promises to be an exciting season, and we must strive to improve upon our most disappointing placing last season.

We welcome to Lower Mead our new signings. Tony Kelly, a most prolific striker has joined us from Hayes, and who can forget the excellent goals he scored for his former club in the Cup matches here last season? I'm glad he's now wearing a blue shirt! Steve Tapley returns after spells with Enfield and Yeovil, and it's a real pleasure to have 'Taps' back. John Campbell, a midfield man, has signed from Barking, and Rod Findlay, a strapping defender, joins from Burnham. Rod's previous clubs include Watford, Orient and Harrow Borough. We wish all four every success. Dennis Byatt, who you may have heard from the dugout in our pre season friendlies, has been promoted to Coach, which is splendid news for us all. Dennis's knowledge, dedication, enthusiasm and unparalleled humour will be crucial this season. Norman Milne has now departed to concentrate on business and our very best wishes go to Norman, (we'll miss his videos). We are, at the time of writing, still negotiating with Alan Risk, and Danny Bailey has been enjoying a months trial with Exeter City. We will know by now whether Danny has signed for them. Terry Rowe will be with us until the end of September when he returns to America.

You will note our new kit this evening, and we are very thankful for our new sponsorship by Harrovian Estates. We look forward to a long and successful partnership!

Our Ball Boys this season are supplied by Belmont Boys Football Club, and I hope they don't end up chasing balls all over Harrow!

Here's to a great season!

Steve

THE CHAIRMAN WRITES

Welcome back to this Season's campaign which, sadly, will be our last in Wealdstone. Everybody will now no doubt be aware of the fact that the inevitable decision to sell Lower Mead was made last month after Extraordinary General Meetings of the Club and Limited Company took place, when votes in excess of 99% agreed the sale. It has been no secret that we have been experiencing acute financial difficulties for some time now, so acute in fact that it became impossible to responsibly continue to compound financial losses which, if allowed to spiral for much longer, would surely have signalled the demise of this great Club forever.

The decision to sell was not taken lightly and a tremendous amount of heart searching has taken place over the past few months, but the Board of Directors and the Club Committee, after long discussions and consideration, inevitably took the responsibility and the right decision to safeguard our long term future and progression for, obviously, this Club in a different location is definitely preferable to no Club at all, wherever that might be.

To lay the blame at someone's door for this upheaval, regretfully will not solve our problems, suffice to say that lessons have been learnt the hard way, and the horrendous mistakes and errors taken by previous administrations will certainly not be allowed to occur again.

What then for the future? We will vacate Lower Mead on the 14th May 1990 and take up temporary residence in Donnington Road Stadium, at Willesden, in the London Borough of Brent, for the commencement of Season 1990/91 whilst our search and discussions continue for a permanent new home, as near as possible to Lower Mead. The proceeds of the sale will, after operating expenses have been deducted, be invested in trust for capital growth, which will increase our stake in readiness for building a new Stadium. It is the Club's intention to lay on double decker buses to convey you, our loyal supporters, to and from Harrow and Willesden free of charge for at least three months, in an effort to soften the blow of this upheaval, and I sincerely hope that full use of this facility will be made and that you will all continue to support our team and urge them on to greater heights.

Finally let me assure everybody that the commitment and will for the progression of this Club is deeply entrenched in myself and my Board of Directors both in mind, body and soul and we look forward to your continued support in our efforts to create an asset and legacy for the future.

ALAN CLIFTON, Chairman

MEMBERSHIP 1989/90

General admission charges this season will be £2.20, (Concessions £1.20). Enclosure and Stand is 50p. There are different types of membership shown below, each giving substantial discounts for the season. Remember that being a member gives you a say in the affairs of the Club.

Call into the Club Office for an application form.

A. Full Membership (With access to Grandstand & Enclosure)	£45.00
B. Full Membership (To ground only)	£38.00
C. Senior Citizen (With access to Grandstand & Enclosure - Full Membership)	£30.00
D. Senior Citizen (To ground only - Full Membership)	£21.00
E. Vice-Presidents Membership (Including full Membership 'A')	£75.00
F. Vice-Presidents Membership - Senior Citizen (Including full Membership 'C')	£45.00
'A' Share Holders should deduct £1.00 from the above amounts.	
G. Junior (Associated) Membership (Open between 14 to 16 years of age).	£21.00

WELCOME TO ASHFORD TOWN . . .

Ashford have finally moved into their new ground in rural surroundings at Kingsnorth, after two seasons sharing with Folkestone. The stadium, called "Homelands" offers facilities to enable the club to keep pace with the growth of the town in anticipation of the opening of the Channel Tunnel.

Chris Weller was re-appointed Club Manager last season after a gap of three years. Chris hopes to improve on last season when Ashfield narrowly escaped relegation with 52 points from 42 matches. Coincidentally, this was the same points total as the previous season when Ashford finished 12th!

PETER CARMAN: Age 34. Now in his second spell with the club having played over 430 games. Formerly with Heme Bay. Capable and experienced goalkeeper who was player of the year in 1987-88. At present is captain of the side.

DAVE LEE: Age 24. Local lad and ex-Kent schools player who came through the reserves. Now an exciting right back with an appetite for attacking down the flanks. Usually up amongst the scorers as the club's penalty taker. Player of the year last season.

PAUL BAGLEY: Age 25. In his second season with Ashford after two seasons at Ramsgate. A capable full back as well as centre back. Previous spells at Thanet and Dover.

PETER McROBERT: Ashford's longest serving player, now in his 16th season with the club and is in his benefit year. Is the only player in the club's history to achieve 500 games whilst at Essella Park. Has played in many positions over the years but is now a recognised defender. Other clubs Bromley and Chelmsford City. Club man of the year 1987-88 and 1988-89.

TOM SLOAN: Local lad who made the centre back position his own last season after a season in the reserves. The only player to be ever present last season. Previously played over 200 games for Canterbury City.

NEIL BROWN: In his second season with Ashford after previous experience at Ramsgate and Heme Bay. A midfield player who can be relied upon to give a solid performance.

KEVIN RAYNER: Age 27. Rejoined the club this season after a 2 year absence. Previously a regular with the club in the southern division before a successful season with Kent League Heme Bay. A composed midfield player, who regularly scores goals.

JEFF ROSS: Rejoined the club last season after spells at Welling, Heme Bay, Tonbridge and Gravesend. An exciting left sided player who can recapture the days of old fashioned wing play. His pace a telling cross and was up on the scores list last season with 8 goals.

PAUL CARLTON: Joined Ashford last season after much success with Kent League, Sittingbourne. Scored 16 goals last season, a most hard working and strong forward.

DAVID ARTER: Age 24. Returned to Ashford last season after successful seasons at Heme Bay and Tonbridge. Strong in the air and one of Kent's prolific goal scorers. Leading marksman last term with 25 goals.

TIM HULME: Age 27. Influential midfield player who joined from Hythe Town. Formerly with Folkestone and Dover, Tim played a major role in the latter club's promotion in 1987/88.

PETER JARVIS: A midfield player who does not lack aggression or mobility. Unpredictable and exciting to watch and is in his second season with the club. Previous experience at Sheppey United and Chatham Town.

GARY CLARK: Age 19. Joined Ashford from Kent League Whitstable Town this season after a period on loan last season. A hard working midfield player with previous experience at Heme Bay.

No Smoking in the Main Stand

You will see around the main stand **NO SMOKING SIGNS**. We request that you observe this regulation which is in accordance with an order from the local authorities acting under the SAFETY OF SPORTS GROUNDS ACT.

Your co-operation is appreciated.

REMEMBER — NO SMOKING IN THE MAIN STAND.

Thank You



CLUBCALL
PHONE NOW
0898 12 11 51

- ☎ 24 hours EVERY day. ☎ Updated daily.
- ☎ News from all around the League.
- ☎ Interviews, features and results.
- ☎ The official Beazer Homes League information service.

For details of all Supercall Sport services send S.A.E. to Dept. BH, PO Box 111, Bracknell, Berks. RG12 1LE. (Allow 28 days for delivery.)
Calls charged at 38p/min peak, 25p/min off peak inc. VAT 



GM VAUXHALL CONFERENCE
OFFICIAL INFORMATION LINE FOR RESULTS AND NEWS.

PHONE: 0898 800 619

All calls charged at 38p per minute (peak hours) and 25p per minute (off peak hours) including VAT.

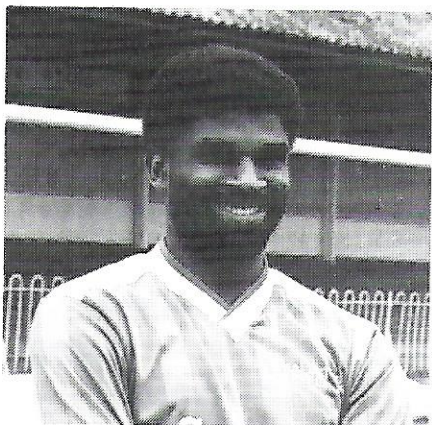


VAUXHALL LEAGUE
OFFICIAL INFORMATION LINE FOR RESULTS AND NEWS

PHONE : 0898 1221155

RECORDS OF PLAYERS NO LONGER WITH WEALDSTONE

	LGE/CUP APP.	GOALS SCORED
SOLOMON ERIEMO	43	2
KIRK CORBIN	67	-
SAMSON OLALEYE	84	24
ALAN CORDICE	334	109
COREY BROWN	59	13
EVERALD LA RONDE	82	7
CHRIS WRIGHT	19	9
TREVOR DASILVA	11	-



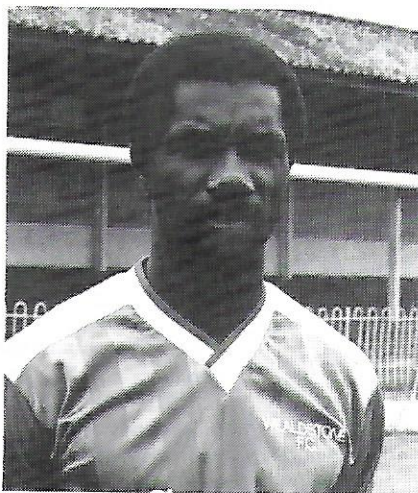
KIRK CORBIN

The very popular Kirk has decided to retire to concentrate on his business. His vast experience proved very useful last season.



ALAN CORDICE

The end of an era! The great Alan Cordice has moved on, and everyone will have fond memories of him. If only we could turn the clock back 10 years!



EVERALD LA RONDE

'Ev', a most talented player, was plagued with injuries during his spell with us, and we wish our former skipper every success.

FIXTURES RESULTS



Date	Opponents	Ven	Comp	Result	Attend
Sat 19	Alvechurch	A	BHL		
Tue 22	Ashford Town	H	BHL		
Sat 26	Burton Albion	H	BHL		
Sat 2	Bromsgrove Rovers	A	BHL		
Tue 5	Dorchester	A	BHL		
Sat 9	Weymouth	H	BHL		
Mon 11	Gosport Borough	A	BHL		
Sat 16	St Albans City	A	FAC 1st Qual		
Sat 23	Cambridge City	H	BHL		
Sat 30			FAC 2nd Qual		
Sat 7	Worcester City	A	BHL		
Tue 10	Weymouth	H	C/C 1st Rd		
Sat 14	Corby Town	H	BHL		
Tue 17	Burnham	1st Leg. A	W/G 1st Rd		
Sat 21	Gravesend & N'fleet	H	BHL		
Tue 24	Ashford Town	A	BHL		
Sat 28	Dover Athletic	H	BHL		
Tue 31	Burnham	2nd Leg. H	W/G 1st Rd		
Sat 4	Moor Green	H	BHL		
Sat 11	Gloucester City	A	BHL		
Sat 18	Bromsgrove Rovers	H	BHL		
Sat 25	Dartford	A	BHL		
Sat 2	Atherstone United	H	BHL		
Tue 5	Dorchester Town	H	BHL		
Sat 9	VS Rugby	A	BHL		
Sat 16	Gravesend & N'fleet	A	BHL		
Tue 26	Crawley Town	H	BHL		
Sat 30	Waterlooville	H	BHL		
Mon 3	Chelmsford City	A	BHL		
Sat 6	Bath City	A	BHL		
Sat 13			FAT 1st Rd		
Sat 20	Alvechurch	H	BHL		
Sat 27	Weymouth	A	BHL		
Sat 3			FAT 2nd Rd		
Sat 10	Gloucester City	H	BHL		
Tue 13	Gosport Borough	H	BHL		
Sat 17	Cambridge City	A	BHL		
Sat 24	Dartford	H	BHL		
Sat 3	Burton Albion	A	BHL		
Sat 10	Corby Town	A	BHL		
Sat 17	Worcester City	H	BHL		
Sat 24	Bath City	H	BHL		
Sat 31	Atherstone United	A	BHL		
Sat 7	Waterlooville	A	BHL		
Sat 14	Chelmsford City	H	BHL		
Mon 16	Crawley Town	A	BHL		
Sat 21	Dover Athletic	A	BHL		
Sat 28	VS Rugby	H	BHL		
Sat 5	Moor Green	A	BHL		

DATE	OPPONENTS	VENUE
AUG Tue 29	Wokingham Town	A
SEP Wed 20	Barnet	H
Tue 26	Wokingham Town	H
OCT Mon 2	Welling United	A
NOV Tue 7	Enfield	A
Wed 15	Wycombe Wanderers	H
Wed 22	Aldershot	A
Wed 29	Leyton Orient	A
DEC Wed 13	Aldershot	H
Wed 20	Cambridge United	H
1990		
JAN Wed 3	Barnet	A
Wed 17	Southend United	H
Tue 23	Gillingham	A
Wed 31	Enfield	H
FEB Wed 7	Southend United	A
Tue 20	Welling United	H
Tue 27	Wycombe Wanderers	A
MAR Wed 7	Colchester United	H
APR Wed 4	Brentford	H
Wed 11	Cambridge United	A
Wed 18	Gillingham	H
MAY Wed 2	Brentford	A
Wed 9	Leyton Orient	H
Mon 14	Colchester United	A

WENDY FAIR CAPITAL LEAGUE

SOUTHERN LEAGUE SEASON	HOME	AWAY
1972/73 (Div 1 Sth)	3-0	0-5
1973/74 (Div 1 Sth)	4-1	1-0
1981/82 (Southern Div)	3-0	0-0
1988/89 (BHL Premier)	4-1	2-3
(Wealdstone's score given first)		

SUMMARY OF LEAGUE ENCOUNTERS	P	W	D	L	F	A
HOME	4	4	0	0	14	2
AWAY	4	1	1	2	3	8
TOTAL:-	8	5	1	2	17	10

OUR RECORD AGAINST ASHFORD TOWN

PREMIER DIVISION									
Final Table for Season 1988-89									
	P	W	D	L	F	A	Pts		
Merthyr Tydfil	42	26	7	9	104	58	85		
Dartford	42	25	7	10	79	33	82		
V.S. Rugby	42	24	7	11	64	43	79		
Worcester City	42	20	13	9	72	49	73		
Cambridge City	42	20	10	12	72	51	70		
Dover Athletic	42	19	12	11	65	47	69		
Gosport Borough	42	18	12	12	73	37	66		
Burton Albion	42	18	10	14	79	68	64		
Bath City	42	15	13	14	66	51	58		
Bromsgrove Rovers	42	14	16	12	68	56	58		
Wealdstone	42	16	10	16	60	53	58		
Crawley Town	42	14	16	12	61	36	58		
Dorchester Town	42	14	16	12	56	61	53		
Alvechurch	42	16	8	18	56	59	56		
Moor Green	42	14	13	15	38	70	55		
Corby Town	42	14	11	17	55	59	53		
Waterlooville	42	13	13	16	61	63	52		
Ashford Town	42	13	13	16	59	76	52		
Fareham Town	42	15	6	21	43	68	51		
Leicester United	42	6	11	25	46	84	29		
Redditch United	42	5	7	30	36	105	22		
Bedworth United	42	4	7	31	36	102	19		

MIDLAND DIVISION									
Final Table for Season 1988-89									
	P	W	D	L	F	A	Pts		
Gloucester City	42	28	8	6	95	37	92		
Atherstone United	42	26	9	7	85	38	87		
Tamworth	42	26	9	7	85	45	87		
Halesowen Town	42	25	10	7	85	42	85		
Grantham Town	42	23	11	8	66	37	80		
Nuneaton Borough	42	19	9	14	71	38	66		
Rushden Town	42	19	8	15	71	50	65		
Spalding United	42	17	13	12	72	64	64		
Dudley Town	42	16	13	13	73	62	61		
Sutton Coldfield Town	42	18	7	17	56	56	61		
Willenhall Town	42	16	12	14	65	71	60		
Forest Green Rovers	42	12	16	14	64	67	52		
Bilston Town	42	15	7	20	63	71	52		
Ashtree Highfield	42	12	15	15	57	62	51		
Hednesford Town	42	12	15	15	49	57	51		
Banbury United	42	10	14	18	53	74	44		
Bridgnorth Town	42	10	14	18	53	74	44		
Stourbridge	42	11	10	21	37	65	43		
King's Lynn	42	7	13	22	31	67	34		
Coventry Sporting	42	6	13	23	39	91	31		
Wellingborough Town	42	5	15	22	39	72	30		
Mile Oak Rovers	42	5	10	27	46	98	25		

SOUTHERN DIVISION									
Final Table for Season 1988-89									
	P	W	D	L	F	A	Pts		
Chelmsford City	42	30	5	7	106	38	93		
Gravesend & Northfleet	42	27	6	9	70	40	87		
Poole Town	42	24	11	7	98	48	83		
Bury Town	42	25	7	10	75	34	82		
Burnham	42	22	13	7	78	47	79		
Baldock Town	42	23	5	14	69	40	74		
Hastings Town	42	21	11	10	75	48	74		
Hounslow	42	21	6	15	75	60	69		
Salisbury	42	20	5	17	79	38	65		
Trowbridge Town	42	19	7	16	59	52	64		
Folkestone	42	17	8	17	62	65	59		
Corinthian	42	13	13	16	59	69	52		
Canterbury City	42	14	8	20	52	60	50		
Witney Town	42	13	11	18	61	71	50		
Dunstable	42	11	14	17	42	57	47		
Buckingham Town	42	12	10	20	56	79	46		
Erith & Belvedere	42	11	10	21	48	63	43		
Andover	42	11	9	22	56	90	42		
Sheppey United	42	10	8	24	50	90	38		
Thanet United	42	7	15	20	47	95	36		
Tonbridge A.F.C.	42	7	6	29	50	98	27		
Ruislip	42	6	8	28	47	112	26		

HARROW SHOW 1989

The Supporter's Club will once again be present at this years event, which is being held over the Bank Holiday weekend 27/28 August.

The stall will include Tombola, Mini-Golf, Presentation Display and the ever popular Beat The Goalie.

In the past it is only because of your great offers of help that we have enjoyed such a success. If you feel that you are able to spare any time, however little, please contact LAYNE PATTERSON via the Club Shop or on 01-423 3105.

The sort of help we need are, Tombola sellers, Goalkeepers, Ball Boys, etc, etc, etc.

It is our fourth year in attendance at the show and probably more important than ever to show the public of Harrow what a great club Wealdstone F.C. still is.

Cheers!

LAYNE PATTERSON
Harrow Show Organiser 1989

LONG BALL DOWN THE MIDDLE

After five long years L.B.D.T.M. has again hit the Lower Mead Terraces.

Issue No. 20 is now available for only £1.00 so get your copy quickly, before it's too late!

I would just like to thank Mr. Martin Lacey of JUMA PRINTERS who saved this magazine at the eleventh hour after being let down by our previous printers he very kindly stepped in at very short notice.

LAYNE PATTERSON
Asst. Secretary W.F.C. Supporters Club

CAPITAL FOOTBALL LEAGUE FINAL TABLE SEASON 1988/89

	P	H O M E			G O A L S		A W A Y			G O A L S		P T S
		W	D	L	F	A	W	D	L	F	A	
1. BARNET	24	9	1	2	29	17	8	2	2	22	13	54
2. LEYTON ORIENT	24	8	0	4	33	20	7	2	3	22	13	47
3. BRENTFORD	24	6	2	4	26	12	8	2	2	24	19	46
4. CAMBRIDGE UNITED	24	7	2	3	30	17	5	3	4	28	16	41
5. SOUTHEND UNITED	24	6	3	3	29	13	6	1	5	19	17	40
6. COLCHESTER UNITED	24	5	4	3	27	21	5	2	5	25	26	36
7. WEALDSTONE	24	6	1	5	17	26	5	2	5	29	26	36
8. GILLINGHAM	24	5	3	4	24	13	4	2	6	26	27	32
9. WYCOMBE WANDERERS	24	5	2	5	30	24	4	1	7	17	21	30
10. ENFIELD	24	4	3	5	18	25	3	0	9	21	46	24
11. WELLING UNITED	24	4	2	6	30	29	2	2	8	13	33	22
12. WOKINGHAM TOWN	24	4	2	6	18	22	0	7	5	14	23	21
13. AYLESBURY UNITED	24	3	2	7	13	27	0	1	11	6	44	12

BEAZER BANTER . . . By Sudhir Rawal

For the Season's first article, I thought it would be an idea to assess each Clubs' chances for the forthcoming Championship challenge.

ALVECHURCH: Our opponents from last Saturday have been beset by financial troubles, and for all their friendliness it seems very probable that they could be relegation candidates.

ASHFORD TOWN: This Season sees the end of their exile from Ashford, after two Seasons groundsharing with Folkestone. They should have a much better Season, probably Top Ten.

ATHERSTONE UNITED: The side who managed to keep local rivals Tamworth down for at least one more Season, thanks to a penalty six minutes from the end of their final League match of the Season. They were promoted on goal difference. However, it will prove very difficult to survive, and must be relegation candidates.

BATH CITY: Appear to change managers as often as some people change their underwear, thus not helping their consistency. Despite the Bristol Rovers ground-share, they are in financial trouble. Therefore, a position just above mid-table is likely.

BROMSGROVE ROVERS: They are always there or thereabouts. However, they lack consistency that will probably cost them the Championship.

BURTON ALBION: One of those great sleeping giants. However, they have sold both of their feared twin strikers and could struggle. Probably finish in the top half.

CAMBRIDGE CITY: Surprised many with their high placing last Season. Success was build around a large, strong team but I can't see them doing as well this Season.

CHELMSFORD CITY: Promoted as Champions of the Southern Division by scoring more than 100 League goals. They could quite easily do a "Merthyr" and get promoted in successive Seasons.

CORBY TOWN: A very bruising side, and as they have much experience in their squad, it is unlikely they will be relegated.

CRAWLEY TOWN: Much will depend on Gerry Armstrong's form. The best they can hope for is mid-table.

DARTFORD: Everyone's favourite for promotion, especially having been the 'bridesmaid' for successive Seasons. A lot depends on the form of Peter Taylor, on whom they rely immensely.

DORCHESTER TOWN: Unlikely to trouble any of the top teams, but should survive.

DOVER ATHLETIC: Fell away at the end of the Season having, at one time, looked certain title winners. They should finish top half, but will not challenge for the title.

GLOUCESTER CITY: Comfortably won the Midland Division, but I can't see them being much away from mid-table.

GRAVESEND & NORTHFLEET: Promoted after overcoming great financial problems. No more than mid-table can be expected in what should be a consolidation Season.

GOSPORT BOROUGH: Surprised many people with their high position last Season and a repeat would again cause great surprise. No better than mid-table.

MOOR GREEN: Fell away very badly at the end of the Season, and look favourites for the dreaded drop.

VS RUGBY: Led the League for so long, only to have the title snatched away from them. Bobby MacDonald was their inspiration, but he has now departed for Burton Albion. I can't see them repeating their lofty position, but should be in the top half.

WATERLOOVILLE: Only just survived relegation last Season, but had an excellent 6-1 pre-season win over Harrow Borough. Not that that is saying much! Should be one of the relegation contenders.

WEALDSTONE: Pre-Season form hasn't been impressive. The squad is probably 2-3 players short of the Championship. A top five place should be ensured; the Championship unlikely, I'm afraid.

WEYMOUTH: Always used to be one of the richest non-League Clubs in the country. Rumours have it that they have severe financial problems, therefore, instant promotion is unlikely.

WORCESTER CITY: Tend to start badly and finish well. If they can improve their early Season form they could challenge for the title.

PREDICTIONS: Well, I will stick my neck out and make the following predictions:-

Top five: 1. Dartford 2. Worcester City 3. Wealdstone 4. Chelmsford City 5. Bromsgrove Rovers

Relegation: Atherstone United, Waterlooville, Moor Green, Alvechurch.

SIDELINES by Neale Harvey

Here we go again then. Another season is upon us but rather than being of a routine nature the next nine months or so will surely be the watershed in the history of Wealdstone Football Club. There are many reasons why it is vital that we have a good season. Firstly, the move to Willesden at the start of next season will inevitably lead to a fall in attendances unless we can offer the attraction of Vauxhall Conference football to the local population as well as our long standing supporters. Secondly, a lot of money has been spent on our playing squad during the summer and it goes without saying that Alan Clifton will be looking for a return on his not inconsiderable investments. Tony Jennings has now had over eighteen months at the club and will be keen to make his mark in terms of winning trophies. And thirdly, Wealdstone F.C. have recently fallen light years behind local rivals Enfield and Barnet. The club needs to be back in the top flight so we can once again have the opportunity of dominating the local scene and tasting the scent of victory over 'The Auld enemy'. There is a lot to play for so let us all hope that the players are aware of the passion amongst our followers and let's make sure that our followers channel that passion into solid support for the team. Only by working together will success follow and the effort has to be one hundred percent otherwise we might as well pack it in.

One of the funniest stories to emerge during the summer months was that of the Herefordshire Football Association who had organised a lavish dinner to celebrate their centenary year. FA Chief Executive Graham Kelly had been lined up as the guest of honour and all the preparations were complete when somebody spotted a minor complication. The Herefordshire FA was in fact only 90 years old! Red faces all round and a hasty cancellation was made.

Am I alone in thinking that if English clubs are to be banned from Europe indefinitely surely it is time that the Italians had a similar punishment meted out to them. Throughout the summer all I seem to be reading about are the latest disorders, riots, stabbings, shootings and deaths from last seasons Italian league games. It would appear that all clubs over there have about three or four different gangs whose aim is simply to maim or even kill opposition fans, throw objects at players and generally create an atmosphere of fear and oppression. Things have now degenerated to such a state that only two weeks ago in Genoa, fans of the city's two big clubs, Sampdoria and Genoa, staged a pitched battle near Sampdoria's ground. Fifteen people were taken to hospital and the police made numerous arrest. Nothing new there you might say, except for one thing - there wasn't a match on that day!

At last. A glimmer of hope for our national game has shown through the murkiness of its recent history. The Football League has finally appointed Gordon Taylor of the PFA as its chief executive under a new president Bill Fox. For too long Taylor has been the lone voice of sense amongst a sea of inadequate outpourings from the likes of Ken Bates, David Dein, Gordon McKeog and Ron Noades whose loyalty to the game only tends to depend on what financial benefits they can reap i.e. television, executive boxes, more meaningless cup finals etc . . . Gordon Taylor has done more for the game in the past ten years than any of those. He was a major influence in saving the likes of Wolverhampton Wanderers, Bristol City and Bradford City from extinction. He has played major 'behind the scenes' roles in preventing the creation of a 'super league' and helped settle the long running televised soccer dispute between the B.B.C., I.T.V. and the Football authorities. Gordon Taylor is a 'soccer man' and I believe he will prove to be the perfect administrator in the difficult period ahead. He will give the game leadership and a base on which to tackle post-Hillsborough rulings, fans violence, continued exclusion from Europe, and the imminence of identity cards. It is a lot for him to take on and progress will not be made overnight. I am willing to predict however that in two years time the game may just be able to see light at the end of what has proved to be a very long tunnel indeed.

The award for being the bravest man in the world (or the stupidest, depending on your point of view) must go to Maurice Johnston who by signing for Glasgow Rangers became the first Catholic to play for that most Protestant of clubs. The strength of ill-will generated by his move to Ibrox has been unbelievable, not least of all fuelled by the fact Johnston had only recently committed himself verabably to the cause of Celtic. You really have to experience the passion of the football scene in Scotland to appreciate what I am saying. So far however, things seem to be working out for Johnston and he has received a warmer reaction by the Rangers following than expected. Things may change however if there are any more results like the opening day 0-1 home defeat by St. Mirren. Next Saturday's old firm meeting could see some fireworks and I only hope nothing serious occurs.

Finally, I can only re-iterate the words of my colleagues writing for this programme and welcome our new signings, especially 'Tappers'. They're all good players and I wish them all the best in their efforts to push Wealdstone back into the Conference.

CLUB SHOP CHAT with Toby Jackson

In the Club Shop today: As well as scarves, pens, cloth club crests, wrist-bands, mugs, key fobs and thousands of programmes, we have:

Club Pennants: Our Presentation pennants were selling like hot cakes at the end of last season! The large "Double-size" pennants are £2.50.

Club Ski-hats: Our woollen blue and white ski-hat, now a familiar sight at away grounds, comes complete with club name and crest, and sells at £2.50.

Club Ties: Wealdstone FC Club Ties are available at £6 each. The ties come in four colours: Royal Blue, Maroon, Grey and Brown.

Club Umbrellas: Our order of two dozen giant golf umbrellas has arrived in Wealdstone colours with our club crest featured. The sunshine won't last so be prepared, price £13.95.

The Stones Greeting Card: Supporters may remember the popular card featuring Paul Bowgett and Enfield's Dave Howell that was on sale in 1987. This year a famous Vince Jones photo is featured in the medium of a multi-purpose Birthday/Christmas/Get Well(?) card. On sale today at 80p.

Beazer Homes League Badge: The official League badge is on sale today at £1.50, featuring the League motif in red and blue enamel.

Programme Binders: With a new season under way, you will need our purpose-made binders to keep your programmes in good order. £1.65 each with club name embossed in gold.

Kit Donor Scheme: It's never too soon to "sign up" your favourite player in this vital club fund-raiser! Call in to the Club Shop today and let's get that Player Grid full up.

MATCHES FROM THE PAST by Roy Couch

TWO YEARS AGO . . .

GM Vauxhall Conference

Saturday 22nd August 1987

Cheltenham Town (1)1 Wealdstone (1)1

Wealdstone: Welsh, Pittaway, Dowe, Byatt, Hatter, Wainwright, McCarthy, O'Keefe, Perry, Walton, Hirst (sub. N. Cordice)

A goal by Byron Walton (now with Windsor & Eton) earned us a point in the season's first league match.

TEN YEARS AGO . . .

Alliance Premier League

Wednesday 22nd August 1979

Kettering Town (0)2 Wealdstone (0)0

Wealdstone: Cranstone, Fursdon, Pearce, Watson, Horgan, Barwick, Moss, James, Johnson, Wainwright, N. Cordice.

Roy Clayton with two goals in seven minutes just after half-time secured the points for the home side.

FIFTEEN YEARS AGO . . .

Southern League Premier Division

Tuesday 20th August 1974

Wealdstone (3)4 Dartford (0)1

Wealdstone: Morton, Kinnear, Godfrey, Burgess, McCormick, D. Evans, Fulton, T. Evans, Byrne, Duck, Henderson. (sub. Fairclough)

We scored three times in the space of eight minutes midway through the first half before John McCormick put through his own goal to make it 3-1. Our scorers were Byrne 2, Fulton and Godfrey.

THIRTY YEARS AGO . . .

Athenian League

Saturday 22nd August 1959

Wealdstone (3)3 Leyton (1)1

Wealdstone: Culver, Mowle, Hurrell, Townsend, Hall, Saunders, Massey, Sells, Farrell, Moran, Evans
There could hardly have been a more dramatic start to the season. We kicked off and had the ball in the net after 18 seconds before a Leyton player had been in possession, the scorer Matt Farrell. All the goals came in the first 35 minutes of a fast, entertaining game which grew less sparkling as the players wilted under the fierce sun blazing from a cloudless sky. Viv Evans scored our other two goals.



TEAMS

	HT	
	FT	

Wealdstone (Blue/White)

Ashford Town (All Yellow)

CHANGES	TEAM	SCORER	SCORER	TEAM	CHANGES
	KEVIN FOSTER	1		PETER CARMAN	
	STEVE TAPLEY	2		DAVE LEE	
	SEAN NORMAN	3		PAUL BAGLEY	
	PAUL MORRIS	4		PETER McROBERT	
	MARK HARRISON	5		TOM SLOAN	
	ROD FINDLAY	6		NEIL BROWN	
	TERRY ROWE	7		KEVIN RAYNER	
	PAUL GOYETTE	8		JEFF ROSS	
	TONY KELLY	9		PAUL CARLTON	
	PAUL WILKINS	10		DAVID ARTER	
	TONY LYNCH	11		TIM HULME	
	JOHN MARGERRISON	12		PETER JARVIS	
	PETER MASON	14		GARY CLARK	

OFFICIALS

Referee: **Mr D.C. Madgwick** (Aylesbury)

Linesmen: **Mr M.J. Austen** (Carpenders Park)
Mr C. Lewis (Watford)

RED TRIM
YELLOW TRIM

BALL DONOR

We are very grateful for the donation by COUNTRYWIDE MARKETS for setting the ball rolling this season. COUNTRYWIDE operate the Harrow Market in our car park every Thursday.

HERE NEXT

Saturday 26 August 1989
BEAZER HOMES PREMIER DIVISION
WEALDSTONE v BURTON ALBION
Kick off 3.00pm