

DON BRUCE

Bookmakers

ATHLETICS **B**OWLS **C**RICKET **D**ARTS **E**QUESTRIANISM

FOOTBALL **G**REYHOUNDS **H**OCKEY **I**CE HOCKEY

JOCKEY CHAMPIONSHIPS **K**EEN PRICES **L**OTS OF

PONUSES **M**OTOR RACING **N**ETBALL **O**RSE RACING

PROFESSIONAL BOXING **Q**UICK SERVICE **R**UGBY

SNOOKER **T**ENNIS **U**EFA CUP **V**OLVO MASTERS

WINTER OLYMPICS **X**CITING OFFERS **Y**ACHTING

ZAP DOWN TO ONE OF OUR BRANCHES
FOR THE COMPLETE SPORTING
SERVICE

WISLIP HIGH STREET · NORTHOLT PARK · HATCH END · BUSHEY MILL
WISLIP GARDENS · ICKENHAM · EASTCOTE LANE · SOUTH RUISLIP
SHAFTESBURY CIRCLE · PINNER ROAD · CENTRAL HARROW

OR CALL OUR CREDIT ACCOUNTS LINE ON
0895 624221

F.C.

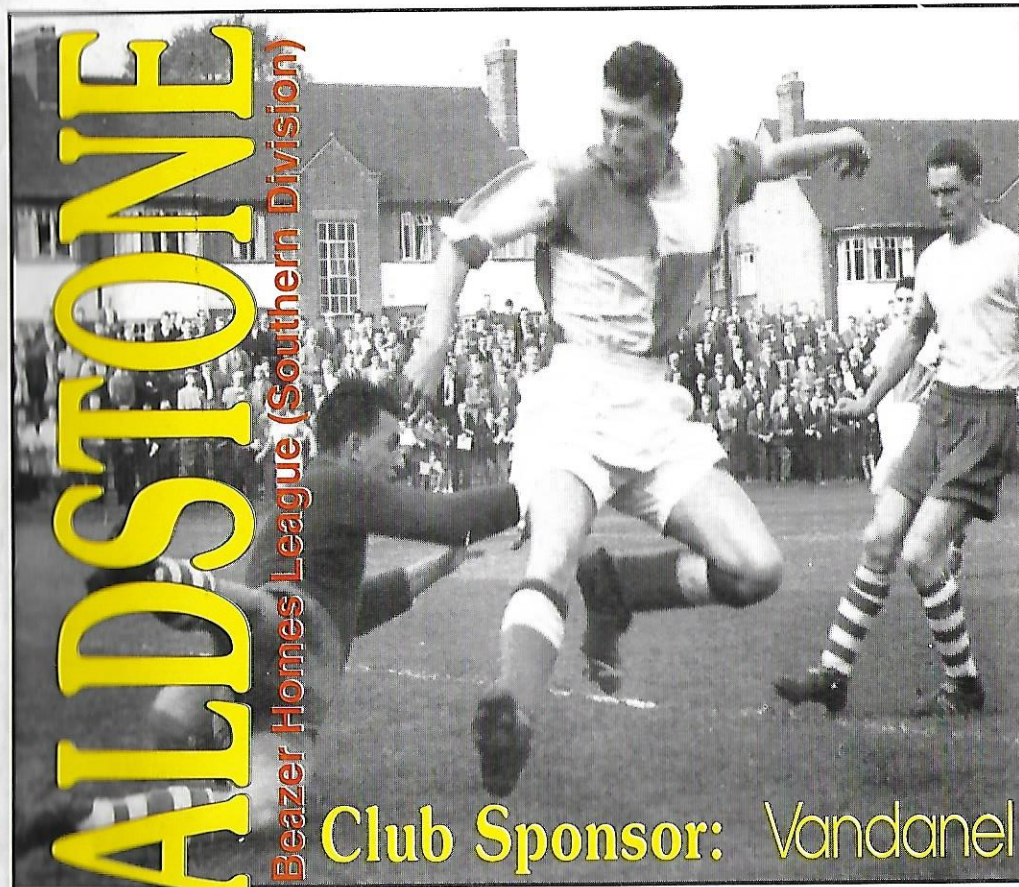
MATCHDAY PROGRAMME Season 1994/95



Founded 1899

WEALDSTONE

Beazer Homes League (Southern Division)



Club Sponsor: **Vandanel**

WEALDSTONE



STONES
SOCCERLINE
0891 10 19 85

Vandanel

Sport & Leisure Ltd

Vandanel Sport & Leisure Ltd.

Capitol House
241 Shernhall Street
London, E17 9DZ
Telephone: 081-521 0700
Fax: 081-521 3230

OFFICIAL KIT SPONSORS TO

WEALDSTONE

FOOTBALL CLUB

and :- BATH CITY, CAMBRIDGE UNITED, FARNBOROUGH TOWN,
ULHAM, STALYBRIDGE CELTIC, WYCOMBE WANDERERS,
TEVENAGE BOROUGH, CREWE ALEXANDRA & BARNET.

We are also happy to quote for Youth and Sunday Club's



WEALDSTONE

FOOTBALL CLUB LIMITED

The Warren, Beaconsfield Road, Hayes, Middlesex UB4 0SL

Telephone: 081 813 7800 Fax: 081 813 7720

Affiliated to the Middlesex County Football Association
Members of the Southern Football League

Patron:
RUSSELL GRANT

Board of Directors:
P.M.RUMENS (Chairman), N.E.DUGARD (Vice Chairman),
L.J.PATTERSON (Company Secretary),
Q.J.FOX, G.L.SHARPE.

Football Club Management Committee:
P.M.RUMENS (Chairman), S.P.HIBBERD (Secretary),
A.G.COUCH, L.J.PATTERSON.

Team Manager:
FRED CALLAGHAN

Assistant Team Manager:

Sportstherapist:
ALAN WHARTON

Club Secretary:
STEVE HIBBERD

Assistant Club Secretary:
ALAN COUCH

General Manager:
KIP HEWITT

General Services Manager/
First Aider:
JOE McKEEVER

Administrative
& Commercial Manager:
LAYNE PATTERSON

Programme Editor/
Club Statistician:
ROY COUCH

Kit Manager:
GRAHAM SMITH

Club Safety Officer:
ROGER SLATER

Stones Clubcall Line:
PETER WORBY

Major Honours:

1951/52: Athenian League, Champions.
1965/66: F.A. Amateur Cup, Winners.
1973/74: Southern League (First Division South), Champions.
1981/82: Southern League (Southern Division), Champions.
1981/82: Southern League Cup, Winners.
1984/85: GM Vauxhall Conference, Champions.
1984/85: F.A. Trophy, Winners.

Welcome ...

We have pleasure in welcoming to The Warren, the players, officials and supporters of Weymouth and Bury Town Football Clubs for Beazer Homes League (Southern Division) fixtures. We trust you will enjoy your time here and have a safe journey home later on. This welcome is also extended to the Match Officials for these matches, Messrs. Cashin, Asplen & Lubinsky (Weymouth), and Messrs. Osman, Maskell & Mays (Bury Town). Hope you too have a pleasant time whilst in our company.

THE VIEWS EXPRESSED IN THIS PROGRAMME
ARE NOT NECESSARILY THOSE OF
THE BOARD OF DIRECTORS
OF WEALDSTONE FOOTBALL CLUB

BEAZER HOMES LGE (SOUTHERN DIV)
v. WEYMOUTH
SAT. 29TH APR. 1995, 3.00PM
v. BURY TOWN
MON. 1ST MAY 1995, 7.45PM
PROGRAMME £1.00





FROM THE EDITOR

Well here we are at the end of another disappointing season. Home matches against our friends from Weymouth and Bury Town, followed by a visit to Salisbury City next Saturday, bring the curtain down on our 1994/95 season.

After a reasonable start back in August we have gradually slipped down the league table and look certain to finish in the bottom half. We now have a much better squad than we had last season but, for some reason or other, they have been unable to string more than a couple of successive wins together all season. The loss of Tim Buzaglio with a broken ankle when he was scoring consistently, and we were enjoying a good run of results (1 defeat in 8 games), was a bitter blow. Since our great win over Waterlooville, Tim's last full game, we have managed just one win in 12 games. You can hardly fault our attack which has scored 70 goals in the league, bettered only by the top six clubs, plus Tonbridge, in our division. Our 'defence' has been our downfall with 88 goals conceded. No other club in our division has conceded that many. At least we can't complain about a lack of goals in our matches here at The Warren this season. There have been 18 in the last two alone!

Last Saturday's ten goal game with Weston-Super-Mare was the highest aggregate for a HOME league/cup match (excluding Capital League) since we joined the Southern League in 1971. It beat the previous two 7-2 wins we had against AP Leamington in the Southern League (Premier Division) in 1976 and Boston United in the Gola League in 1985.

No doubt Weymouth and Bury Town will be hoping to emulate Havant's and Weston's goal scoring prowess here. We welcome both sets of supporters, usually Weymouth are one of the better supported clubs whenever they visit us. I'm sure, despite their recent run of four successive away defeats, which ended on Tuesday when they won 3-2 at Margate, Weymouth will bring more supporters than Waterlooville (8) and Havant (5). Our home record against Weymouth and Bury Town is pretty impressive, we beat them both here last season, but can we do it again this time?


At this time of the season it is customary for me to thank all of you who have regularly purchased our programme throughout the season. I hope you have enjoyed reading it. My thanks also to Neale Harvey, Steve Hibberd, Nick Conway and Layne Patterson who have contributed to its content on a regular basis. I've enjoyed compiling the programme despite the fact that it takes up many days and hours of my time (almost a week per programme). It becomes a bit of a bind when we have three home matches on successive Saturday's like we've had recently! I shall certainly enjoy the break during the next three months. Also thanks to everyone who has supported our Ball Donor & Kit Donor schemes and the 'Predict-A-Score' competition. The last named will be in operation again next season and I hope it will again attract 75 entrants.

Our final match of the season takes place next Saturday when we visit Salisbury City in the league, kick off 3.00pm. Salisbury may be league champions by the time that match takes place and if they are will be wanting to mark the occasion with a convincing win in front of their own supporters. According to our 'Predict-A-Score' competition Layne Patterson reckons we'll win 27-0! Are you sure you've got that the right way round Layne?

I hope you all have a very good summer and will be back to support us again next season when we stage our home matches at Edgware Town's White Lion Ground. It will be much more convenient than The Warren for the majority of us, especially those of you who rely on public transport. Don't forget we are competing in the Harrow Senior Cup along with Edgware Town, Harrow Borough and Rayners Lane prior to the 1995/96 league programme getting underway. The draw, dates, venues and kick-off times appear elsewhere in this programme. Roger Slater will be producing a special programme to cover the four matches in the tournament. Please try and come along to these pre-season games, it should be a very interesting tournament.

ROY COUCH

Today's Match Sponsor is:-



the
Elmslie
Bunder

The Independent Wealdstone Mag

SECRETARY'S NOTES

After a long hard season which promised so much yet yielded absolutely zilch, on the field that is, my last set of notes for the season are compiled on the wet Saturday morning of the Weston-Super-Mare match.

Firstly, welcome to the players, officials and supporters of Weymouth who, like ourselves, appear to have nothing to show for a season which started off so brightly, the 5-1 demolition job on us back in November was the most clinical finishing I have witnessed all season. Secondly, we welcome on May Day (which this year isn't; courtesy of Mr Major and his merry clowns!) Bury Town who almost visited us in February. Due to freak near hurricane conditions an hour or so before kick off, the pitch became completely waterlogged causing the match referee, Mr Osman, to alert the Bury team coach of the postponement just as they were about to enter the M40 slip road - Sorry for the inconvenience and wasted journey lads but we had no choice. A big welcome is also afforded to the six match officials, especially Mr Osman, for whom it is his last ever Beazer Homes match - enjoy the game gents.

Changes effecting discipline are to come into force next season. The changes affect the Isthmian, Northern Premier and Southern Leagues and will bring these leagues into line with the Vauxhall Conference. The agreed match suspensions relating to a sending off are as follows:-

	Present	New
Violent conduct or serious foul play	3 matches	The same
Foul or abusive language	3 matches	2 matches
Second caution	3 matches	1 match
Preventing goal scoring opportunity	1 match	The same

As most of you are probably aware by now, we were unsuccessful in our appeal to the F.A. regarding the proposed switch to Isthmian football next season. We have decided to exercise our right of appeal and you can rest assured that Quentin 'Rumpole' Fox and Graham 'Mr Media' Sharpe are doing all they can to improve our already strong case for the logical move across the Pyramid structure - just for once you mandarins at the F.A., please climb off your pedestals and permit logic to outweigh tradition!

With the close season almost upon us number one of the seven reasons why football is better than women is very apt: (1) You get a break from football during the summer. (2) You only have to see football twice a week. (3) Footballers don't shout at you when you forget their birthday. (4) There are no referees to send a woman off when she argues with you. (5) Football doesn't complain when you watch it on the telly. (6) Footballers don't want to know how much you earn. (7) Football doesn't complain if you leave the toilet seat up!

Karen Brady eat your heart out! (You can eat mine any day!)

Finally, I would just like to thank the back-room boys who have made my first season as Secretary so much easier, namely, ROGER 'I'll play crap music if I want to' SLATER for his dual role as Announcer and Safety Officer (found out what that is yet Roge?), PETE 'Mr Blobby' WORBY for his marathon match reports on the Soccerline - you might never find out the score, but by god he doesn't half improve our coffers! GRAHAM 'Mr Angry' SMITH our ever present kit man, ALAN 'don't throw that shower head at me you *****' WHARTON for fixing up our walking wounded and who, next season, will have our repossessed physio equipment to work with, and finally, JOE 'how can anyone predict so many incorrect scores' MCKEEVER for his sterling work as 'mine host' in the boardroom. But the biggest thanks must go to all you long suffering true supporters - please support us again at our new Edgware home next season.

Come on you Stones.

STEVE HIBBERD

PUBLICANS SUPPORT

OUR AIM IS TO PROMOTE WEALDSTONE F

THE KINGSFIELD ARMS

A Warm Welcome from
Maureen, Barry, Iris, Margaret,
Caroline, Janet & John
Bessborough Road,
Harrow

THE ABERCORN ARMS

Good Luck
for
the Season
74 - 78 Stanmore Hill,
Stanmore

THE GEORGE

Danny & Debbie
Excellent Beer Ga
Marsh Road,
Pinner

WEALDSTONE

STONES SOCCERLINE

0891 10 1985

YOU'LL HEAR IT FIRST ON THIS LINE!

RESULTS, FIXTURES, TEAM NEWS,
MATCH REPORTS, INTERVIEWS ETC.

*Calls charged at 39p per minute cheap rate,
49p per minute at other times*

AIR

INTERNATIONAL OF HARROW

YOUR LOCAL TRAVEL AGENT

13 STATION ROAD HARROW, MIDDX

TEL: 081-861 3181 FAX: 081-861 1331

COMEDY CAPE



Fancy Dress H
40 Lowlands R
Harrow, Middx
081-864 063



The Harrow Senior Cup 1995 - 1996

Saturday 5th August 1995

Wealdstone F.C v Rayners Lane F.C
Kick Off: 3:00 pm

Edgware Town F.C. v Harrow Borough F.C.
Kick Off: 6:30 pm

Both Matches at Harrow Borough F.C.

Sunday 6th August 1995

Third Place Play-off
Kick Off: 3:00 pm

Final Match and Presentations
Kick Off: 6:30 pm

Both Matches at Edgware Town F.C.

Buffet and Discotheque:
8:00 pm at Edgware Town F.C. Social Club



WEALDSTONE FOOTBALL CLUB - KIT DONORS 1994/95

	£20 Tracksuit	£30 Boots	£15 Shirt	£7 Shorts	£5 Shinpads	£5 Club Tie	£3 Socks
ROD BRATHWAITE	THE ELMSLIE ENDER						
MARK HILL			REGENCY WIZARDS F.C. MARATHON LEAGUE		SARAH IRVINE		JAMES SMITH
TOMMY MASON			'FINGERS' and JAMES		ALEXANDER IRVINE		JAMES SMITH
RICHARD BUZAGLO	MICHAEL AND JACKIE PULL IN						
ROD FINDLEY			BOB MADDOX		KEN WIGGINS	"DANIEL"	"KATIE"
JOHN SHANAHAN				EMMA SMITH		DOMINIC WHYLEY	
GERRY ELWARD	QUENTIN FOX		KIP HEWITT	THE HIGH MEAD TERRACE "FOUR"			
TIM BUZAGLO	AKHIL RAWAL		PHIL JEFFERSON		DOMINIC WHYLEY	TONY HAYES	AKHIL RAWAL
MARK BIGGINS	ROGER SLATER				LAYNE PATTERSON	'FINGERS' and JAMES	
BILLY HUDSON					TOBY JACKSON 'LAPELS'		
JON FRANKLIN			DAN THE MAN, GOOD LUCK DOWN UNDER, FROM		ROB BROWN	RITA FOLEY	CHRISTOPHER FOLEY
STEVE BROWNE	CAPITAL FOOTBALL LEAGUE		KIP HEWITT		TONY HAYES	THE LOST BET	
GERRY SOLOMON					CHRISTOPHER FOLEY	RHYS CLARK	
SIMON QUAIL **			TONY, PETER & STEVE DREW	'METAL MODE'	MEGAN CLARK	NICKY CLARK	

** Simon Quail's gloves donated by TONY PLATT!!!

WEALDSTONE FOOTBALL CLUB - BALL DONORS 1994/95

Date	Opponents	Donor
Wed. 24th Aug. 1994	Margate	SFC Wealdstone
Sat. 3rd Sep. 1994	Yate Town	Dan, Ron, Tony, Steve, Peter, John, Jack, Jim, Gordon, Val and John in memory of their great pal, the late Ron Davies
Sat. 10th Sep. 1994	Harrow Borough	Nick Woolford
Sat. 17th Sep. 1994	Bromley	Ray Kemp
Sun. 16th Oct. 1994	Purfleet	Quentin Fox
Sat. 5th Nov. 1994	Tonbridge	Ray Corner
Mon. 14th Nov. 1994	Bedfont	Federation of Middlesex Sports
Wed. 16th Nov. 1994	Baldock Town	Luton Town Football Club
Sat. 26th Nov. 1994	Erith & Belvedere	Toby Jackson
Sat. 10th Dec. 1994	Fareham Town	Nick Dugard
Wed. 14th Dec. 1994	Clevedon Town	Phil Jeffreson
Wed. 21st Dec. 1994	Ashford Town	Wealdstone F.C. Supporters Club
Mon. 26th Dec. 1994	Burnham	SFC Wealdstone
Sat. 7th Jan. 1995	Salisbury City	Nick Woolford
Sat. 14th Jan. 1995	Bashley	Layne Patterson
Sat. 28th Jan. 1995	Braintree Town	Don Bruce Bookmakers
Sat. 11th Feb. 1995	Witney Town	The Blue Ribbon Lottery
Sat. 4th Mar. 1995	Fisher 93	Tony Platt
Sat. 11th Mar. 1995	Waterlooville	Roy Couch
Sat. 1st Apr. 1995	Poole Town	Val Shearer
Wed. 5th Apr. 1995	Newport (IOW)	Nick Symmons
Sat. 15th Apr. 1995	Havant Town	Springheath Print Capital Football League
Sat. 22nd Apr. 1995	Weston-Super-Mare	Alan Couch
Sat. 29th Apr. 1995	Weymouth	The Elmslie Ender
Mon. 1st May 1995	Bury Town	Nick Woolford

Prizes at end of the season: Winner £50 Runner-up £10 Last Place £5

TEAM NAME	MANAGER	Pts	TEAM NAME	MANAGER	Pts
RENEGADES	A. HIBBS	222	LINO LAYERS UTD	L. PATTERSON	144
ELMSLIE ENDER	S. RAWAL	213	LOWER MEAD REMEMBERED	A. COUCH	133
ARMCHAIR ATHLETIC	K. WIGGINS	191	G.D.S. FC	G. JONES (1)	128
RAF BLUES	S. HIBBERD	191	KIPPERS KILLERS	K. HEWITT	127
TEAM TANNY	R. SLATER	190	THE HERTS ATTACKERS	N. CLARK	123
KATDAN UTD FC	N. DUGARD	186	BARRY'S BEST	B. BENVENISTE	122
RELEGATION LOOMING	N. KREBS	179	THE REF'S A WHISTLER	R. BROWN	110
PITCH INVADER ATHLETIC	J. ALBERT	177	SHARPE SHOOTERS	S. SHARPE	109
THE BUSHWACKERS	A. WILLIAMS	176	SLUMBUSTER WANDERERS	R. HARRIES	89
SNOW WHITE	Q. FOX	168	BOARD ROOM BOYS	J. McKEEVER	73
WHERE'S CORBIN FC	P. FRUIN	155	GRIMS REAPERS	G. JONES (2)	28
R.R.O. RAGNORAK ROVERS	S. KHANNA	148			

WEALDSTONE F.C. - STAFF PROFILE No. 15 - PETER WORBY

NAME (IN FULL): Peter Worby. AGE: 36. DATE OF BIRTH: 16th March 1959
 MARITAL STATUS: Married to Pauline. CHILDREN: Matthew (9), Drew (5), Bruce (2).
 POSITION IN CLUB: The 'Voice' on the Stones Soccerline. OCCUPATION: Claims Inspector employed by the National Farmers Union Insurance Society and Avon Insurance Company.
 HOBBIES: Wealdstone FC, SFC Wealdstone, Gardening, Family and Beer etc.
 FAVOURITE MUSIC: (Varied) Beatles, Bowie, Bruce Springsteen, Prince, Leonard Cohen, Anti Nowhere League etc. FAVOURITE TV PROGRAMMES: Coronation Street, Any Good Film, The Young Ones, Auf Wiedersehen Pet, Minder, Match of the Day, Wimbledon (Tennis).
 BEST WEALDSTONE PLAYERS OF ALL TIME: Being realistic, probably Cliff Jones, Terry Dyson and Johnny Haynes although all of course were well past their prime when I watched them play for Wealdstone. Obviously, one has to include Stuart Pearce and Vince Jones - now both full internationals. George Duck, Mark Graves, Alan Cordice and Tom English come to mind as the best forwards, with John Watson, Fred Barwick and Robin Wainwright as the best midfielders. Sadly I'm too young to really remember the likes of Hugh Lindsay and Charlie Townsend etc. My best two defenders would have to be Dennis Byatt and Paul Bowgett. Oh ... I've just remembered Steve Brinkman who I thought was enormously talented. Goalkeepers - Bob Iles, Ray Goddard and Andy Williams.
 WORST WEALDSTONE PLAYERS OF ALL TIME: Excluding recent seasons I would have to go for Steve Briscoe (the master of putting a cross into either the Cinema or Elmslie End at Lower Mead, Martin Hirst (the sun tanned donkey), Paddy McCarthy, Hughie Dowe, Terry Boyle (remember him - never won a tackle as I recall), David Gipp (our record signing at £15,000 - what a bargain!), Liam Barham, Ray Bullen (goalkeeper?), Mike Pittaway, and Keith Furphy & Kenny Halliday could be my two ineffectual wingers. Wow .. what a team.
 BEST WEALDSTONE GOALS OF ALL TIME: You have to admire 'own goals' don't you. Although not a goal for Wealdstone, Dennis Byatt's 'own goal' at Lower Mead just 7 seconds into the match with Weymouth in 1987 was a joy to behold. The two 'own goals' scored by Bury Town's Adam Longden and Darren Hayward in our 5-1 home win last season were a bit special - the first an attempted overhead kick and the second a soaring header from a corner. Was it Dave Bassett (I think it was) who scored the 'own goal' when we beat Wimbledon 1-0 back in 1974/75? Oh, and I suppose I should mention the Neil Cordice volley v. Yeovil back in 1979 and Andy Graham's goal at Wembley in the FA Trophy Final. BEST/MOST MEMORABLE WEALDSTONE MOMENTS OF ALL TIME: (1) Seeing Clevere Forde's thighs for the first time. (2) Discovering that David Gipp cost us £15,000 (and apparently our Manager hadn't even seen him play when he signed him). A shrewd bit of business by Barry Fry for Barnet. (3) Losing at home to AP Leamington in 1981 and being relegated for the first time. Remember Jimmy Sweetzer's penalty miss when we were 1-0 in front? (4) Losing 4-3 at Yeovil in the FA Trophy after leading 3-0. (5) The final whistle against Enfield in the FA Trophy semi-final, second leg, when

(Continued on next page)

BEAZER HOMES LEAGUE



0891 12 11 51

Results Interviews News

Calls cost 39p/minute cheap 49p/minute other times. Clubcall, 1-9 Downham Road, London N

Printcrafts

Printers & Designers

081 - 903 5442.

- * Letter Heads
- * Leaflets
- * Colour Printing
- * Silk Screen
- * Thermography
- * Gold Foil
- * One to one Million Leaflets.

10000 A5 Leaflets	£ 95.00
100000 A5 Leaflets	£450.00
200000 A5 Leaflets	£820.00

BEST PRICES.



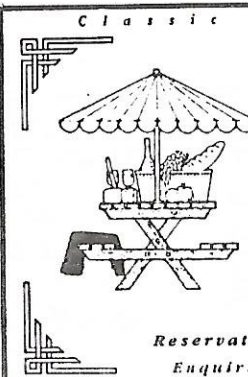
FOR ALL YOUR
PRINT SUPPLY
NEEDS.

CONTACT THE A.M. ORDER LINE

ON 0345 - 306305

FAX 0442 - 247242

AM International, Maylands Avenue
Hemel Hempstead, Herts. HP2 7ET



Classic Italian Food
Fellini
Restaurant

451 Uxbridge Road

Hatch End

Pinner

Middlesex HA5 4JR

Reservations: 081 428 4359

Enquiries: 081 420 1191

Football wins the Pools every Saturday



Every time you enter Littlewoods, Vernons or Zetters Pools you are helping football prosper, in particular, paying the bill for essential safety work and ground improvements throughout the game.

The Football Trust was formed to administer the Pools' contributions and help clubs at all levels to improve safety and comfort.

The Trust receives virtually all of its income, directly or indirectly from Littlewoods, Vernons, Zetters Pools and Spot the Ball.

Over £4m a year is devoted to Pyramid and grass roots football. Every club depends on the support of the FOOTBALL TRUST and on the success of the football pools.



LITTLEWOODS VERNONS ZETTERS
Making sure football wins
the Pools each week



THE FOOTBALL TRUST
Helping the game

THE FOOTBALL TRUST, WALKDEN HOUSE, 10 MELTON STREET, LONDON NW1 2EJ



Greenside House, 50 Station Road, Wood Green, London N22 4TP
Tel: 081 889 3191

SPONSORS OF WEALDSTONE F.C.'S LUCKY PROGRAMME

For details of William Hill Freephone Credit Betting Services
Call 0800 - 289892

plus

DON'T MISS A BET!

WITH INSTANT DEBIT CARD FREEPHONE BETTING

If you have a SWITCH or DELTA badged
Bank or Building Society Card -

YOU CAN BET ON IT TODAY
(Minimum investment £10. Over 18s only)

CALL FREE **0800 44 40 40**



IF THIS ADVERTISEMENT HAS BEEN SIGNED BY OUR COMMERCIAL

MANAGER, YOU ARE A WINNER! CONTACT LAYNE PATTERSON FOR DETAILS.

we knew that we had got to the Final. (6) The three times taken penalty scored by George Duck in the FA Cup against Reading which we won 2-1. (7) Beating Woking 5-3 (aet) in the FA Cup after we had been 3-1 down with 10 minutes to go.

FAVOURITE OTHER TEAMS: Millwall, SFC Wealdstone.

FAVOURITE GROUND: Lower Mead - Midweek Game.

Redditch United, Hillingdon Borough (their old Leas Stadium ground), Watford.

FAVOURITE ALL-TIME PLAYERS: John Watson & Fred Barwick - they never gave up.

LIKES/DISLIKES ABOUT CURRENT GAME: (Likes) Everything connected with non-league football. (Dislikes) (1) The standard of refereeing at our level of football (our fault for dropping so far down the Pyramid.) (2) The money that dominates everything from the Premier League down to the Beazer Homes Southern Division. (3) Players who are not committed to the cause although they are committed to picking up their pay packet.

HOPES/AMBITIONS FOR WEALDSTONE F.C.: (1) Obviously a ground of our own. (2) Some kind of success. (3) Being able to watch football that I actually enjoy. (4) My father first took me to a Wealdstone match when I was nine. Since then I have followed the Stones for over 25 years. I want to follow Wealdstone for another 25 years and I want my own sons to similarly follow Wealdstone if they so desire and so I want the Club to remain in existence. This will not happen if we keep losing sums in the region of £100,000 per year. We cannot survive long term if this continues. Whilst it would be nice to win the league and get promotion, followed by further promotion to the Conference, this would probably bankrupt us within 3-4 years. I, personally, would rather see us playing in the Spartan League if this meant that we balanced our books, survived, and managed to get our own ground. Until we have our own ground and facilities I do not see how we can hope to be ambitious on the pitch. (5) Bigger crowds.

ANY OTHER COMMENTS: (1) Tesco's in Harrow and a lovely new stand at Watford. Why? (2) The 'Double' in 1984/85 - was it a dream? (3) Ray, Nick and Layne - the three Magi! (4) Why don't I hate Harrow Borough any more? Can someone help me?

SFC WEALDSTONE 1994/95

As I am sure most people reading this know, SFC Wealdstone currently run two Sunday sides - both competing in The Marathon League. Many regular supporters of WEALDSTONE still form an important part of SFC both on and off the pitch. The current season has been most successful for both the First Team and the Reserve Team. In addition we have played a couple of Vets games (which shows how some of us have aged) and also a handful of games designated as being Third Team matches. Next season we intend to run 3 Sunday sides and, as always, we welcome any new players wishing to join us. If you should be interested in joining SFC Wealdstone next season then please feel free to contact me either today or, alternatively, telephone me on 01923 442647 and I will tell you all you want to know.

FIRST TEAM

The First Team have now completed their season and have finished with a good chance of being promoted to Division Two. Dependant upon the results of other teams we shall either finish in 1st, 2nd or 3rd position. Only two league matches resulted in defeat for us which represents an excellent achievement bearing in mind we were only promoted from Division 4 to Division 3 at the start of the season. All told, our playing record this season is: Played 30 Won 17 Drawn 5 Lost 8, with most of our defeats coming in matches against opposition from higher divisions.

RESERVE TEAM

Our 2nd Team had an exceptional season. At the time of writing we still have 6 league matches to complete but I will be surprised if we do not win the Division 6 Championship, or failing that take runners-up spot. Full credit is due to my assistants Paul Ryan and James Knightsbridge who have jointly run the 2nd Team this season. Congratulations. The playing record for our Reserve Team at the time of writing is: Played 29 Won 18 Drawn 4 Lost 7.

(Continued on next page)

THIRD TEAM

As I have mentioned, SFC WEALDSTONE are expanding and we shall be running 3 teams next season. Unfortunately, this season, we have been unable to guarantee regular football for all of our squad members with competition for places being very keen. For this reason we took the decision to start running a 3rd Team and so this does mean that there is an opportunity for any Wealdstone supporter wanting to join us to do just that.

DONATIONS TO WEALDSTONE FC

During the course of this season we have managed to support Wealdstone by various means. We have donated 2 match balls, sponsored jointly a race at the WFC Greyhound night at Wembley, paid for an advert in the programme and, finally, purchased some scratch-off lottery cards. In addition, we have managed to persuade a number of non-Wealdstone supporters to attend matches - both home and away.

TRAINING

Following initial pre-season training we have regularly trained at Yeading FC on Thursday nights. Next season we shall follow a similar training format having hired the astro turf pitch for 2 hours each week.

TOUR

SFC WEALDSTONE are going on tour to Edinburgh from the 12th-15th May. The tour party is expected to be about 20 strong and I am sure the tour will be a great success - off the field if not on!

SOCIAL EVENTS

The Committee have successfully organised 2 quiz nights, a race night, a Christmas Dinner and we still have the annual end of season Presentation Evening to look forward to.

I do trust this article has been of some interest to you, the reader. If not, then I am sorry. Obviously we do feel an important part of Wealdstone FC and anyone wishing to join us will be more than welcome. I think I can guarantee you a good time both on and off the field of play.

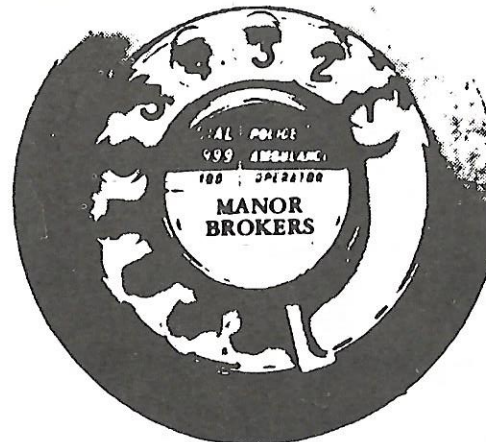
PETER WORBY (WOBS), CLUB MANAGER

OUR RECORD AGAINST WEYMOUTH

League Matches			Summary of League Encounters						
	Home	Away	P	W	D	L	F	A	
1974/75 (SL Premier Div.)	W2-1	L0-4	Home	16	10	4	2	29	17
1975/76 (SL Premier Div.)	W3-1	W2-0	Away	17	5	0	12	24	36
1976/77 (SL Premier Div.)	W2-1	L0-2	Total ...	33	15	4	14	53	53
1977/78 (SL Premier Div.)	D0-0	L1-2							
1978/79 (SL Premier Div.)	D0-0	L1-2							
1979/80 (Alliance Prem.Lge.)	D1-1	L0-4	Other Matches						
1980/81 (Alliance Prem.Lge.)	D1-1	L1-2	1971/72: Friendly, Weymouth won 2-0 (at Wealdstone).						
1982/83 (Alliance Prem.Lge.)	L2-4	L1-4	1985/86: Bob Lord Trophy 2nd Round, Weymouth drew 1-1 (at Wealdstone) Weymouth won 3-2 (at Weymouth).						
1983/84 (Alliance Prem.Lge.)	W2-0	W4-0	1989/90: Premier Inter-League Cup 1st Rd, Weymouth drew 1-1 (after extra time) (at Wealdstone).						
1984/85 (Gola League)	W3-2	W3-0	Wealdstone won 2-0 (at Weymouth).						
1985/86 (Gola League)	W1-0	L2-4							
1986/87 (GM Vauxhall Conf.)	W3-1	L2-3							
1987/88 (GM Vauxhall Conf.)	L0-2	L1-2							
1989/90 (BHL Premier Div.)	W2-1	L0-1							
1990/91 (BHL Premier Div.)	W4-2	W2-0							
1993/94 (BHL Southern Div.)	W3-0	W3-1							
1994/95 (BHL Southern Div.)	Today	L1-5							

(Wealdstone's score given first)

INSURANCE?



Talk person to person

MANOR BROKERS

we offer a full and, most important a personal service for all types of insurance. It's a service we're proud to extend to mortgage both domestic and industrial. Pop in at a time and you're guaranteed the friendliness of attention.

INSURANCE BROKERS TO WEALDSTONE FOOTBALL

The Olde Barn House, High Road, Eastcote, Pinner, Middx.
Telephone: 081-868-1121

OPEN 7 DAYS A WEEK • ALL DAY SATURDAY AND SUNDAY • PRESENTLY

MR MAN'S EST. 1970

Swan 天樓樓

PEKING RESTAURANT
ARE INTRODUCING A NEW

'HAPPY HOUR'

FROM SUNDAY MARCH 6th

20% will be deducted from your final bill

MONDAYS TO FRIDAYS

Lunchtimes 12 noon-2.30pm & Evenings 6pm-7.30pm

SATURDAYS - 12 noon through to 7.00pm

SUNDAYS - 12 noon through to 7.30pm

Set menus & A La Carte always available

★ TAKE-AWAY SERVICE ★

WITH OUR USUAL 20% DISCOUNT

OPEN 7 DAYS A WEEK

For the finest cuisine - call us now!

322-326 UXBRIDGE ROAD, HATCH END, PINNER, MIDDLESEX HA5 4HR. TEL: 081 428 8821/421 2328

COMFORTABLE SURROUNDINGS • FAMILY AND BUSINESS PARTIES CATERED FOR AT GENEROUS PRICES • 20% OFF ALL TAKEAWAYS • IN THE WINE LISTEN GUIDE • SEATING CAPACITY OF 120 PERSONS • PARTY ROOM AVAILABLE • FRIENDLY AND HELPFUL STAFF • YOUR SERVICE • FINE PEKING AND Szechuan CUISINE • SERVED IN

HOUSEHOLD APPLIANCES

SALES • SERVICE • SPARES • REPAIRS

40 Queensbury Station Parade
Edgware, Middlesex HA8 5NN

081 952 7878 081 381 1424

OFFICE FAX

YOUR LOCAL SERVICE ENGINEER

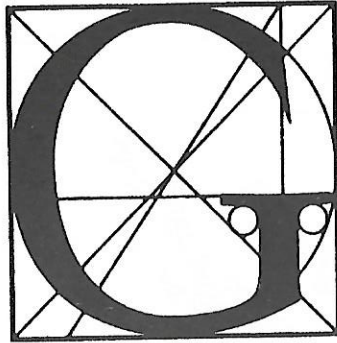
If you would like us to resolve any problems that you have with any of the items listed below, please do not hesitate to ring us. Should we be unavailable please leave a message on our answerphone and we will return your call.

Sales and Service as follows:

- | | |
|------------------|-----------------|
| WASHING MACHINES | TUMBLE DRYERS |
| DISHWASHERS | VACUUM CLEANERS |
| IRONS & KETTLES | SPARE PARTS |
| SHOWERS | WATER SUPPLY |
| BOILER SERVICING | COOKERS |
| PLUMBING | HEATING |

RECONDITIONED APPLIANCES AVAILABLE

GARRY HALL JOHN RANDALL
(Est. 15 years)



JARDINE FABER INSURANCE

wish Wealdstone F.C.
the best of luck for the coming
season

**Specialists in Motor & Household
Extra Discounts**

For SFC, WFC Members & Shareholders

Contact Martin Burrows
Tel No: 0604 39011
Fax No: 0604 233064

Line Faber Insurance Consultants, 36 York Road, Northampton, NN1 5QH

WEALDSTONE APPEARANCES 1994/95 SEASON (All Matches excluding Friendlies) (Substitutes who actually played are shown in brackets)

	BHL	DMC	FAC	FAT	MSC	MCC	AGC	TOTAL	WEALDSTONE	
Maximum Possible	39	2	2	2	2	4	2	53	CAREER	
Simon Quail	31(1)	1(1)	-	2	2	4	-	40(2)	42	
Mark Hill	30	1	-	2	1(1)	4	2	40(1)	41	
Gerry Solomon	29	2	1	2	-	3	-	37	55	
Tommy Mason	24	2	1	2	-	3	2	34	34	
John Shanahan	20(1)	2	2	2	1	1(1)	2	30(2)	107	
*Gerry Elward	20	1	2	1	-	2	1	27	37	
Terry Birch	17(5)	1	1	-	(1)	2	3(1)	1	25(7)	32
Billy Hudson	16(7)	2	2	2	2	1	-	25(7)	32	
Rod Brathwaite	20(4)	-	-	1	1	3	-	25(4)	34	
Tim Buzaglo	20(1)	-	-	-	2	2	-	24(1)	25	
*Darrell Page	20	1	-	-	1	2	-	24	24	
Rod Findley	12(13)	1	2	2	2	3(1)	1(1)	23(15)	65	
Mark Brown	20(1)	-	-	-	-	2	-	22(1)	32	
Mark Biggins	20	-	-	-	-	2	-	22	22	
Steve Browne	18	-	-	-	-	2	-	20	146	
Barry Gartell	10	2	2	2	-	2	2	20	29	
*Tyrone Kent	11(5)	-	2	2	1	2	1	19(5)	26	
*Andy Jukes	9	1	-	-	2	1	-	13	13	
Jon Franklin	12	-	-	-	-	-	-	12	12	
*Ian McGrath	5	1(1)	1	1	1	-	2	11(1)	25	
*Kevin Robbins	8	-	-	-	2	-	-	10	10	
*Tony Anglin	5	-	2	-	-	-	2	9	32	
*Steve Mattis	5(2)	2	1	-	-	(1)	-	8(3)	11	
Danny Hill	6(1)	-	-	-	-	2	-	8(1)	9	
Stuart Milne	7(1)	-	-	-	-	-	-	7(1)	8	
Richard Buzaglo	6(4)	-	-	-	-	-	(2)	6(6)	12	
*Darren O'Neill	6	-	-	-	-	-	-	6	6	
Marvin Hall	5(5)	-	-	-	-	-	-	5(5)	10	
*Paul Goodison	3	1(1)	1(1)	-	(2)	-	-	5(4)	31	
*Steve Griffiths	3(1)	-	1	-	-	-	1	5(1)	6	
*Paul Webb	1	1	-	(1)	-	1	-	3(2)	19	
*Lance Pedlar	2	-	-	-	-	-	1	3	19	
*Vic Schwartz	-	(3)	1	-	-	-	1	2(3)	17	
Lee Brown	2	-	-	-	-	-	-	2	2	
*Tony Frankland	2	-	-	-	-	-	-	2	4	
*Mark Wilson	-	(3)	-	-	-	-	1(1)	1(4)	5	
Dermot Drummy	-	(1)	-	1	-	-	-	1(1)	117	
*Nick Bettaccini	1	-	-	-	-	-	-	1	1	
*Lee Brownlie	1	-	-	-	-	-	-	1	1	
Keith Francis	-	-	-	-	1	-	-	1	1	
*Tony Gale	-	-	-	-	-	-	1	1	1	
*Francis Joseph	-	-	-	-	-	-	1	1	2	
*Ian Parkinson	1	-	-	-	-	-	-	1	1	
Mark Pepperall	1	-	-	-	-	-	-	1	1	
*Roy Anderson	-	-	-	-	-	-	(2)	(2)	2	
Graham Meakin	-	-	-	-	-	(1)	(1)	(2)	9	
*Steve Frangou	-	-	-	-	-	(1)	-	(1)	2	
Dale Williams	-	-	-	-	-	-	(1)	(1)	5	

WEALDSTONE GOALKEEPERS STATISTICS 1994/95 SEASON (League & Cup Matches)

	Played	Goals Conceded	Average Per Game	Clean Sheets
Barry Gartell	20	32	1.60	6
Jon Franklin	12	24	2.00	2
*Kevin Robbins	10	23	2.30	2
Danny Hill	8(1)	20	2.50	1
Lee Brown	2	6	3.00	0
*Nick Bettaccini	1	5	5.00	0

Also: Outfield player, Mark Hill, took over in goal from injured Jon Franklin at half-time away to Newport (IOW) and conceded one goal.

WEALDSTONE GOALSCORERS 1994/95 SEASON (All Matches including Friendlies)
(Penalties scored are shown in brackets)

	BHL	DMC	FAC	FAT	MSC	MCC	AGC	FR	TOTAL	CAREER
Simon Quail	15(1)	2	-	1	1(1)	5(1)	-	-	24(3)	24(3)
Tim Buzaglo	13	-	-	-	-	3	-	1	17	17
Rod Brathwaite	8	-	-	1	-	2	-	4(2)	15(2)	20(2)
Rod Findley	3	-	1	-	-	2	-	2	8	10
Steve Browne	4(2)	-	-	-	-	3(2)	-	-	7(4)	37(6)
*Tyrone Kent	4	-	-	1	-	-	-	1	6	8
*Gerry Elward	3	1	-	-	-	-	-	1	5	6
Mark Biggins	3	-	-	-	-	1	-	-	4	4
Richard Buzaglo	3	-	-	-	-	-	-	-	3	3
John Shanahan	1	-	-	-	1	1	-	-	3	4
*Paul Goodison	2	-	-	-	-	-	-	-	2	7
Mark Hill	1	-	-	-	-	-	-	1	2	2
Billy Hudson	1	-	-	-	1	-	-	-	2	2
*Francis Joseph	-	-	-	-	-	-	1	1	2	3
*Steve Mattis	1	1	-	-	-	-	-	-	2	2
*Darrell Page	2	-	-	-	-	-	-	-	2	2
Terry Birch	1	-	-	-	-	-	-	-	1	1
Dermot Drummy	-	-	-	-	-	-	-	1	1	13
Marvin Hall	1	-	-	-	-	-	-	-	1	1
*Matt Hayward	-	-	-	-	-	-	-	1	1	1
*Ian McGrath	1	-	-	-	-	-	-	-	1	2
*Lance Pedlar	1	-	-	-	-	-	-	-	1	11
*Vic Schwartz	-	-	-	-	-	-	-	1	1	6
Gerry Solomon	1	-	-	-	-	-	-	-	1	1
*Mark Wilson	-	-	-	-	-	-	-	1	1	1
Richard Mikurenda (Burnham) o.g.	1	-	-	-	-	-	-	-	1	1
TOTALS:-	70(3)	4	1	3	3(1)	17(3)	1	15(2)	114(9)	

APPEARANCES, GOALSCORERS AND GOALKEEPERS STATISTICS include matches played up to and including Tuesday, 25th April 1995. * Player no longer with the Club.

CURRENT LEAGUE FORM (Up to & including Thursday 27th April 1995)

Last 6 Home	Last 6 Away	Last 6 Home	Last 6 Away
WLDLWW	Ashford Town	DDWLLW	DDWLLW
WDWWD	Baldock Town	DWDWWW	WLLLW
DLWWW	Bashley	WDWDW	LDDDD
WWDWD	Braintree Town	WLDDD	WWDWD
LLLWL	Burnham	L.LDLWL	DDWLDW
WLDWD	BURY TOWN	DLLLWL	DWWLL
DLWDWL	Clevedon Town	LDDLDL	DWLLL
WDWLL	Erith & Belvedere	WLLLL	DDDWL
DDDWL	Fareham Town	LWWWWD	DWDWL
DDDDW	Fisher 93	DLWLLD	LDWLL
WDWDD	Havant Town	WDLWWW	DWLLW
			WLLLD
			Margate
			Newport I.O.W.
			Poole Town
			Salisbury City
			Tonbridge
			Waterlooville
			WEALDSTONE
			Weston-Super-Mare
			WEYMOUTH
			Witney Town
			Yate Town

**BEAZER HOMES LEAGUE & DR. MARTENS CUP GOALSCORERS
(up to & including Saturday 22nd April 1995)**

PREMIER DIVISION	MIDLAND DIVISION
J. O'Connor (Hednesford Town).....34	P. Davies (Moor Green).....37
O. Pickard (Dorchester Town).....27	D. Taylor (Ilkeston Town).....32
I. Wheaton (Leek Town).....27	C. Williams (Newport A.F.C.).....32
D. Watkins (Rushden & Diamonds).....26	G. Piggott (Dudley Town).....28
S. Lovell (Sittingbourne).....21	R. Straw (Nuneaton Borough).....25
D. Collins (Rushden & Diamonds).....20	J. Symonds (Bedworth United).....24
	P. McBean (Bridgnorth Town).....22

A SHORT HISTORY OF WEYMOUTH FOOTBALL CLUB

Nicknamed "The Terras", not a corruption of the word "Terror", but an allusion to the club's strip of Terra Cotta and Blue. Weymouth were founded in 1890 as an amateur club and they made an immediate impact in Dorset footballing circles by winning the County Junior Cup in its first three seasons, leaving the hard pressed Dorset F.A. in difficulties finding a replacement trophy.

Perhaps to alleviate further problems Weymouth were reclassified as a senior club but they then immediately won the Dorset Senior Cup, and for good measure upset some of the well known clubs in a good FA Cup run. Weymouth gained the reputation of one of the best amateur clubs in Southern England by the end of the century, and were subsequently admitted to the Western League, Division 2, in 1907. Two seasons later the league was reorganised and Weymouth were admitted to the First Division, celebrating their first season by finishing third the following season.

Having taken the Western League Championship in the 1922/23 season, the club's ambitions over-rode financial caution and the club adopted full time professionalism. Weymouth became a limited company and attained membership of the Southern League. However, Weymouth faced the reality of their decisions and resigned from the Southern League to rejoin the Western League for the 1928/29 season. This was the tonic Weymouth needed and they dominated the Western League in the 1930's to be Championship winners in 1933/34, 1936/37 and 1937/38, plus finishing second in the 1935/36 season. The hero of this time was ex-Portsmouth and Southampton centre-forward Wyndham Haines, who, in five seasons scored 275 goals for the Terras. Between December 1937 and December 1938, Weymouth were undefeated at home, winning 48 out of 54 goals scored 254 goals to 44 conceded.

The 1939-1945 war saw an end to football in Weymouth, with the Recreation Ground requisitioned and out of the club's hands for eight years. In August 1947 Weymouth started from scratch in Division 2 of the Western League and were runners-up in the 1947/48 season. The following season Weymouth finished third in the First Division with the Southern League beckoning. This time Weymouth retained Southern League membership until the club became founder members of the Alliance Premier League in the 1979/80 season. In successive seasons 1964/65 and 1965/66 the Terras were Southern League Champions and they share with Telford United and Yeovil the distinction of playing all twenty seasons in the Premier Division prior to their disbanding.

In the first ever Alliance season Weymouth finished second to Altrincham and were, more often than not, in the top half of the table during their ten years in the League until relegation overtook them in 1988/89.

Weymouth have enjoyed considerable FA Cup success. In 1962 the Terras reached the Fourth Round before losing 2-0 to Preston North End at Deepdale and in 1949 they were defeated 4-0 away to Manchester United in the Third Round. In the FA Trophy, Weymouth twice reached the quarter finals and they have won the Southern League Cup in 1972/73 and been runners-up five times. For good measure Weymouth have won the Dorset Senior Cup TWENTY TWO times.

In recent seasons Weymouth have been involved in notable transfers, GRAHAM GIBSON and PETER GUTHRIE have both been transferred to TOTTENHAM HOTSPUR for £35,000 and £100,000 respectively, while SHAUN TEALE was signed by AFC BOURNEMOUTH for £25,000. The club's record attendance for a home match was achieved in 1987 when 12,000 fans attended a friendly match versus Manchester United for the opening of their new ground, the Wessex Stadium.

WEYMOUTH F.C. - PEN PICTURES - 1994/95 SEASON

MARTIN PETERS: Has shown good form recently and has been promoted from the reserves. A product of the Youth Team.

JORGE DIAZ: Returned to Weymouth recently after a short spell at Dorchester Town. A busy right sided player with good control.

WILLIE GIBSON: Former Leicester City defender who made over 40 Football League appearances. Club Captain who is now in his benefit season. An outstanding and extremely consistent defender. Employed in the engineering trade.

ALEX BROWNE: 21 year old former England Youth international enjoying his best season since turning professional. Dominant in the air with excellent control on the ground. Lifeguard at a local Holiday Camp.

BARRY BLANKLEY: Made over 200 Football League appearances with Southampton, Aldershot and Southend United. An inspirational and dominating midfielder in his first season with Weymouth. A Financial Consultant.

ANDY TURRELL: Returned to the Club from Poole Town. Reliable and adaptable defender who has played in several defensive positions.

GRAEME GEE: Exciting young prospect signed from Portsmouth Civil Service. Versatile player who has played in both attack and defence for the Terras. Has attracted considerable Football League interest. A Trainee Accountant.

RICHARD BARTLETT: Recent signing from Sherborne Town. Tough uncompromising defender who should make his mark in the Beazer Homes League.

TREVOR SENIOR: Prolific Football League goalscorer who scored 201 League & Cup goals in 403 appearances. Twice winner of the Golden Boot award. Won a Beazer Premier medal last season with Farnborough Town. Is a 'Football in the Community' Officer with Weymouth Football Club.

DAVID PUCKETT: Vastly experienced front runner who has seen service with Southampton, Bournemouth and Aldershot. Gained FA Trophy winners medal with Woking last season. Football Coach in the Southampton area.

CHRIS MALE: Ex-Portsmouth and Stoke City midfielder. A cultured performer with great vision and a goalscoring midfielder.

CHRIS EVANS: Young Welsh striker who recently was on trial with Gillingham. Good finisher with great pace. Scored 20 goals from 28 starts last season.

ALAN RODGERS: Last Year's Youth Team Captain who played several first team games towards the end of the season. Now a professional with a bright future. Is a Student at a local college.

DAVID DIAZ: Joined the Club from Dorchester Town with twin brother Jorge. An adaptable player with a good goalscoring record.

MARK CARTER: Product of youth system. Schools and County Youth player.

SHANE STONE: Another product of youth system. Returned this season after a year at local club, Portland United.

DAVE WHALLEY: Recently signed from Wessex League club, Wimborne Town.

KARL RICHARDSON: Young local lad currently with the reserves. Promising midfielder just waiting for his chance.

THE TEAMS...

HT

FT

WEALDSTONE (Blue & White)

1. JON FRANKLIN
 2. MARK BROWN
 3. GERRY SOLOMON
 4. MARK HILL
 5. STUART MILNE
 6. JOHN SHANAHAN
 7. STEVE BROWNE
 8. RICHARD BUZAGLO
 9. ROD BRATHWAITE
 10. SIMON QUAIL
 11. MARK BIGGINS
 12. BILLY HUDSON
 14. TERRY BIRCH
- GK.

WEYMOUTH (Terracotta & Sky Blue)

1. MARTIN PETERS
 2. GEORGE DIAZ
 3. WILLIE GIBSON
 4. ALEX BROWNE
 5. BARRY BLANKLEY
 6. ANDY TURRELL
 7. GRAHAM GEE
 8. RICHARD BARTLETT
 9. TREVOR SENIOR
 10. DAVID PUCKETT
 11. CHRIS MALE
 12. CHRIS EVANS
 14. ALAN RODGERS
- GK.

OFFICIALS

REFEREE : MR. A.C. CASHIN (Woburn Sands, Bucks.)

LINESMEN: MR. M.J. ASPLEN (Aldershot, Hants.)

MR. S. LUBINSKY (Edgware, Middx.)

HERE NEXT

WEALDSTONE v. BURY TOWN
BEAZER HOMES LEAGUE (SOUTHERN DIVISION)
MONDAY 1ST MAY 1995, KICK OFF 7.45 PM

MATCHBALL SPONSOR

THE
ELMSLIE ENDER

MATCHDAY MASCOTS

SAM CASH
and DARREN PATTERSON

STONE F.C.		5 SEASON FIXTURES																			
	Comp.	Res.	Att.	1	2	3	4	5	6	7	8	9	10	11	12	14					
g 20	Fareham Town	BHL	W2-0	141	Gartell	Anglin	Birch	M.Hill	Shanahan	Mason	Elward	McGrath	Pedlar	1	Mattis	1	Hudson	Schwartz	Findley		
g 24	MARGATE	BHL	L0-1	216	Gartell	Anglin	Birch	Findley	Shanahan	Mason	Elward	Hudson	Pedlar		Mattis	Brownlie	Griffiths	Kent			
g 27	Tring Town	FACPr	W1-0	124	Gartell	Anglin	Birch	Findley	1	Shanahan	Kent	Elward	McGrath	Schwartz	Mattis	Hudson	Goodison	Frangou*			
g 29	Baldock Town	BHL	L1-2	311	Gartell	Anglin	Birch	Findley	Shanahan	Griffiths	Elward	Parkinson	Goodison	1	Mattis	Hudson	Schwartz	Wilson			
p 3	YATE TOWN	BHL	W2-0	217	Gartell	Anglin	Solomon	Mason	Findley	Elward	Hudson	Kent	1	Griffiths	Mattis	McGrath	1	Schwartz	Wilson		
p 6	Bury Town	BHL	W3-2	137	Gartell	Anglin	Birch	McGrath	Findley	1	Mason	Elward	Kent	1	Griffiths	Goodison	1	Hudson	Meakin*	Wilson	
p 10	HARROW BOROUGH	FAC1Q	L0-1	401	Gartell	Anglin	Solomon	Shanahan	Findley	Mason	Elward	Kent		Griffiths	Goodison	Hudson	Birch*	Webb			
p 17	BROMLEY	FAT1Q	W3-0	203	Gartell	Shanahan	Solomon	M.Hill	Findley	Mason	Elward	Kent	1	Quail	1	Brathwaite	1	Hudson	Birch	Goodison	
p 24	Witney Town	BHL	W2-0	201	Gartell	Shanahan	Solomon	M.Hill	Findley	Mason	Elward	2	Kent	Quail	Brathwaite	1	Hudson	Mattis	McGrath		
t 4	Sudbury Town	DMC	D3-3	246	Gartell	Shanahan	Solomon	Birch	Findley	Mason	Webb	Elward	1	Goodison	Mattis	1	Hudson	McGrath	Quail		
8	POOLE TOWN	BHL	L0-3	178	Gartell	Shanahan	Solomon	M.Hill	Findley	McGrath	Webb	Elward		Quail	Goodison	Hudson	Birch	Mattis			
t 16	PURFLEET	FAT2Q	L0-3	239	Gartell	Shanahan	Solomon	M.Hill	Findley	Mason	McGrath	Kent		Quail	Drummy	Hudson	Mattis*	Goodison			
t 19	SUDBURY TOWN	DMC	L1-2	89	Gartell	Jukes	Solomon	M.Hill	Page	Mason	Shanahan	McGrath		Quail	1	Mattis	Hudson	Birch*	Goodison		
t 22	Havant Town	BHL	D1-1	226	Gartell	Jukes	Solomon	M.Hill	Page	Mason	Kent	1	Shanahan	Quail	T.Buzaglo	Hudson	Mattis*	Findley			
25	Margate	BHL	L1-3	288	Gartell	Jukes	Solomon	M.Hill	Page	Mason	Kent	1	Shanahan	1	T.Buzaglo	Mattis	Hudson	Findley	Birch		
t 29	Braintree Town	BHL	W3-0	254	Robbins	Jukes	Birch	M.Hill	Page	Mason	Kent	1	Shanahan	1	T.Buzaglo	Quail	1	R.Buzaglo	1	McGrath*	Findley*
v 5	TONBRIDGE	BHL	W3-2	254	Robbins	Jukes	Solomon	M.Hill	Shanahan	Mason	Kent		McGrath	T.Buzaglo	Quail	2(1p)	R.Buzaglo	Hudson	Findley	1	
v 12	Weymouth	BHL	L1-5	935	Robbins	Jukes	Solomon	M.Hill	Page	Mason	Kent		Shanahan	T.Buzaglo	Quail	1	R.Buzaglo	Brathwaite	Findley		
v 14	BEDFONT	MSC	D2-2#	60	Robbins	Jukes	Birch	Shanahan	1	Findley	McGrath	Webb	Hudson	1	T.Buzaglo	Quail	Brathwaite	Mattis	M.Hill		
v 16	BALDOCK TOWN	BHL	L2-6	174	Robbins	Jukes	Solomon	M.Hill	Page	Mason	Kent		Shanahan	T.Buzaglo	Quail	Brathwaite	2	R.Buzaglo*	Findley*		
v 22	Waltham Abbey	MCC	W2-0#	65	D.Hill	Jukes	Birch	M.Hill	Page	Mason	Kent		Shanahan	1	Brathwaite	Quail	1p	Elward	R.Buzaglo	Findley	
26	ERITH & BELVEDERE	BHL	L1-2	196	Robbins	Jukes	Birch	M.Hill	Page	Shanahan	Kent		Elward	T.Buzaglo	Quail	Brathwaite	Findley	1	Hudson		
v 29	Bedfont	MSC	L1-2	102	Robbins	Francis	Birch	M.Hill	Page	Jukes	Kent		Findley	T.Buzaglo	Hudson	Quail	1p	Elward*	Frangou*		
c 3	Ashford Town	BHL	L2-3	362	Robbins	Jukes	Birch	M.Hill	Page	Shanahan	Kent		Brathwaite	Elward	1	Quail	Findley	T.Buzaglo	1	Hudson	
7	GREENFORD UTD	MCC	W8-1	67	D.Hill	Birch	Solomon	M.Hill	Page	Mason	Kent		Elward	T.Buzaglo	2	Quail	4	Findley	2	Frangou	Webb
10	FAREHAM TOWN	BHL	W3-0	193	Robbins	Jukes	Solomon	M.Hill	Page	Mason	Biggins	Elward	T.Buzaglo	1	Quail	1	Brathwaite	1	Kent	Findley	
14	CLEVEDON TOWN	BHL	D1-1	164	Robbins	M.Brown	Solomon	M.Hill	Page	Mason	Elward	Biggins	T.Buzaglo	1	Quail	Brathwaite	Kent*	Findley			
17	Weston-Super-Mare	BHL	L2-4	310	D.Hill	M.Brown	Solomon	M.Hill	Page	1	Mason	Biggins	Elward	T.Buzaglo	1	Quail	Brathwaite	Findley*	Kent		
21	ASHFORD TOWN	BHL	L4-5	167	Bettaccini	M.Brown	Solomon	Birch	Page	1	Mason	Browne	1	Biggins	Brathwaite	1	Quail	1	Elward	Findley	Kent
26	BURNHAM	BHL	D1-1	175	D.Hill	M.Brown	Solomon	M.Hill	Page	Mason	Browne	Biggins	T.Buzaglo	Quail	1	Elward	Brathwaite	Shanahan			
7	SALISBURY CITY	BHL	L1-2	224	D.Hill	M.Brown	M.Hill	Frankland	Page	Mason	Hudson	Biggins	T.Buzaglo	1	Quail	Elward	Findley	Kent			
14	BASHLEY	BHL	W1-0	178	Franklin	M.Brown	M.Hill	Frankland	Page	Mason	Hudson	Shanahan	T.Buzaglo	1	Quail	Elward	Findley	Birch*			
28	BRAINTREE TOWN	BHL	W3-1	173	Franklin	M.Brown	Solomon	M.Hill	Page	Mason	Hudson	Biggins	T.Buzaglo	2	Quail	1	Elward	Findley	Kent*		
4	Bashley	BHL	D2-2	297	Franklin	M.Brown	Solomon	M.Hill	Page	Mason	Browne	Elward	T.Buzaglo	1	Quail	1	Biggins	Findley*	Birch*		
11	WITNEY TOWN	BHL	L1-2	173	Franklin	M.Brown	Solomon	M.Hill	Page	Mason	Browne	Elward	T.Buzaglo	1	Quail	Biggins	Hall	Shanahan*			
25	Tonbridge	BHL	W4-3	488	Franklin	M.Brown	Solomon	1	M.Hill	Findley	Mason	Browne	Shanahan	T.Buzaglo	1	Quail	2	Biggins	Brathwaite	Birch*	
27	Ruislip Manor	MCC	W3-0	138	Gartell	M.Brown	Solomon	M.Hill	Findley	Mason	Browne	2(1p)	Brathwaite	T.Buzaglo	1	Quail	Biggins	Shanahan	Birch		
4	FISHER 93	BHL	D2-2	190	Franklin	M.Brown	Solomon	M.Hill	Findley	Shanahan	Browne	Brathwaite	1	T.Buzaglo	1	Quail	Biggins	Hall	Birch		
11	WATERLOOVILLE	BHL	W2-1	206	Franklin	M.Brown	Solomon	M.Hill	Page	Mason	Browne	1p	Shanahan	T.Buzaglo	1	Brathwaite	Biggins	Quail	Findley*		
14	Clevedon Town	BHL	L2-4	186	L.Brown	M.Brown	Solomon	M.Hill	Findley	Shanahan	Browne	Hall	1	T.Buzaglo	Quail	1	Hudson	Birch	Brathwaite		
18	Yate Town	BHL	L0-4	160	Franklin	Birch	Solomon	M.Hill	Page	Shanahan	Browne	Hall		Brathwaite	Quail	Hudson	Findley	M.Brown			
25	Fisher 93	BHL	D2-2	190	Franklin	O'Neill	Birch	Page	Milne	Biggins	1	Browne	Solomon	Brathwaite	1	Quail	Elward	Hudson	Findley*		
28	Wembley	MCC	L4-6	154	Gartell	M.Brown	Birch	M.Hill	Findley	Biggins	1	Browne	1p	Hudson	Brathwaite	2	Quail	Solomon	R.Buzaglo	Meakin	
1	POOLE TOWN	BHL	D2-2	203	L.Brown	O'Neill	Birch	M.Hill	Milne	M.Brown	Browne	Biggins	Brathwaite	1	Quail	Hudson	1	Findley*	R.Buzaglo		
5	NEWPORT I.O.W.	BHL	L1-2	164	Gartell	O'Neill	Birch	M.Hill	Findley	M.Brown	Browne	Biggins	Brathwaite	Quail	1	Solomon	Hall	R.Buzaglo			
8	Erith & Belvedere	BHL	D1-1	142	D.Hill	O'Neill	Birch	M.Hill	Milne	Biggins	1	Browne	Solomon	Brathwaite	Findley	M.Brown	R.Buzaglo*	Hall			
11	Waterlooville	BHL	L0-5	252	D.Hill	O'Neill	Birch	Mason	Milne	M.Brown	Browne	Soloman	Brathwaite	Quail	Biggins	Hall	R.Buzaglo				
15	HAVANT TOWN	BHL	L2-6	192	D.Hill	M.Brown	Birch	Shanahan	Milne	Hall	Browne	1	Solomon	Brathwaite	Quail	1	Biggins	Hudson	R.Buzaglo		
17	Burnham	BHL	W4-0+	141	Franklin	M.Brown	Solomon	Birch	Milne	Hall	Browne	1p	R.Buzaglo	1	Brathwaite	Quail	Biggins	1	Hudson	Drummy*	
22	WESTON-SUPER-MARE	BHL	L4-6	186	Franklin	O'Neill	Solomon	M.Hill	1	Milne	Hall	Browne	R.Buzaglo	1	Brathwaite	Quail	1	Biggins	Hudson	Birch	
25	Newport I.O.W	BHL	L1-2	192	Franklin	Pepperall	Solomon	M.Hill	1	Milne	M.Brown	Browne	R.Buzaglo	Brathwaite	Quail	Hudson	Milne	Drummy			
29	WEYMOUTH	BHL							Birch	1											
1	BURY TOWN	BHL																			
6	Salisbury City	BHL																			

S denotes HOME FIXTURES. * = Substitute not used. p = Penalty. # = After extra time. wn goal scored.

ROUGHOUT THIS PROGRAMME: BHL = BEAZER HOMES LEAGUE, FAC = F.A.CUP, FAT = F.A.TROPHY, DR.MARTENS CUP (SOUTHERN LEAGUE CUP), MSC = MIDDLESEX SENIOR CUP, MCC = MIDDLESEX CUP, AGC = ARLINGTON GOLD CUP, FR. = FRIENDLIES.

THE TEAMS...

HT
FT

WEALDSTONE (Blue & White)

1. JON FRANKLIN
2. TERRY BIRCH
3. GERRY SOLOMON
4. MARK HILL
5. STUART MILNE
6. JOHN SHANAHAN
7. STEVE BROWNE
8. RICHARD BUZAGLO
9. ROD BRATHWAITE
10. SIMON QUAIL
11. MARK BIGGINS
12. BILLY HUDSON
14. DERMOT DRUMMY
- GK.

BURY TOWN (Red & Black)

1. ROB REDDING
2. STEVE HUBBARD
3. MARK SMITH
4. SIMON RODGERS
5. ANDY TAYLOR
6. MIKE HENRY
7. TONY GILL
8. DALE VINCE
9. SCOTT YOUNG
10. DAVID BROWN
11. DARREN PRIOR
12. KEVIN LAYNE
14. GRAHAM BROWN
- GK.

OFFICIALS

REFEREE : MR. G.J. OSMAN (Thame, Oxon)
 LINESMEN: MR. P.A. MASKELL (Epsom, Surrey)
 MR. G.D. MAYS (Mitcham, Surrey)

HERE NEXT

I DON'T SUPPOSE YOU REALLY CARE,
 HOPE YOU'LL FOLLOW US OVER AT EDGWARE.
 (ROY COUCH)

MATCHBALL SPONSOR

NICK WOOLFORD

MATCHDAY MASCOTS

BEAZER HOMES LEAGUE (SOUTHERN DIVISION) - RESULTS 1994/95 SEASON (Up to & including Thursday 27th April 1995)

Home Team	Away Team																						
	Ash	Bal	Bra	Bhm	Bry	Cle	Eri	Far	Fis	Hav	New	Pool	Sal	Ton	Wat	Wea	Wes	Wit	Yat				
Ashford Town	X	2-2											5-2	2-3	3-0	3-2	2-4		1-1	2-1			
Baldock Town	2-2	X	1-1	2-0	0-0	3-0	0-0	1-1	1-2	1-0	4-1	3-0	3-1	0-7		3-1	2-1	4-1	4-2	3-1	3-2		
Bashley	2-1	0-0	X	1-1		3-1	3-0	1-0	6-0	5-1	0-4	0-0	3-2	0-0	1-2	1-1	2-2	2-2	0-2	2-0		4-0	
Braintree Town	1-2	2-2	1-2	X		4-0	1-1	2-2	3-0	1-1	1-4	1-0	4-2	2-3	3-0	0-0	0-3	0-0	0-2	2-2		1-0	
Burnham	1-5	0-1	1-2	1-3	X	2-1	1-2	0-5	0-0	0-1	0-3	0-2	2-0	1-2	2-3	0-4	0-4	1-2	1-0	2-1		1-1	
Bury Town	1-1	2-3	0-1	4-3	3-3	X	1-1	5-0	1-1	2-3	0-4	2-0	3-2	0-3	1-3	1-0	2-3	1-5	0-2	1-4		1-1	
Clevedon Town	0-2	3-1	0-3	3-1	2-2		X	2-1	5-0	4-1	0-1	1-2	0-2	3-1	1-1	6-0	1-1	4-2	3-0	2-2		3-0	4-4
Erith & Belvedere	2-2	0-1	0-4	5-5	1-0	0-1	2-1	X		1-0	1-2	0-3	1-2	0-6	2-2	0-3	1-1	0-2	0-2	1-1		2-2	1-2
Fareham Town	1-0	1-4			0-1	2-5	5-5	2-2	X	0-4	1-3	0-2	2-0	1-0	0-2	2-3	0-1	10-2	2-3	2-1		1-1	10-1
Fisher 93	5-3	0-0	0-0	2-0	0-4	3-1	3-1	2-2	X	0-1	2-2	2-3	3-3	2-2	0-2	1-1	1-2	2-2	0-0	0-0		1-2	1-2
Havant Town	0-0	1-5	0-0	3-0		3-2	0-2	3-1	3-2	X	2-0	0-0	3-0	0-1	3-0	1-1	1-1	0-0	1-0	1-0		0-2	5-0
Margate	1-3		3-1	1-1	2-1	0-1	3-1	2-3	1-3	3-0	1-4	X	1-2	2-0	0-2	7-3	0-2	3-1	2-1	2-3		1-1	1-0
Newport (IOW)	5-5	0-1	1-0		1-2	1-0	4-2	3-0	0-1	1-3	0-2		X	1-0	0-2	3-3	1-3	1-2	4-3	2-2		1-2	
Pooler Town	3-3	1-3	0-1	2-4	3-0	1-1	0-3	3-5	3-0	0-0	0-3	2-2	0-2	X	0-1	1-3	0-1	3-0	0-4	0-2		2-1	
Salisbury City	3-1	1-0	5-0	2-1	1-0	1-0	3-0	5-1	2-1	1-0		5-2	0-3	2-1	X	3-3	0-2	0-0	1-1	3-0		4-2	
Tonbridge	2-2	0-2	0-0	0-2	5-1	4-3		2-1	1-2	1-1	3-3	3-1	1-1	4-3	2-1	X	2-1	3-4	3-3	0-0		2-2	2-2
Waterlooville	0-1	3-0	1-0	3-1	2-1	4-1	0-0	4-0	1-2	3-1	0-0	5-0	2-0	4-1		4-2	X	5-0	0-2	2-0		2-1	1-1
Wealdstone	4-5	2-6	1-0	3-1	1-1		1-1	1-2	3-0	2-2	2-6	0-1	1-2	2-2	1-2	3-2	2-1	X	4-6			1-2	2-0
Weston-Super-Mare	4-1	1-1	1-3	1-2	5-1	4-0	4-0	5-0	1-1	3-0		0-0	0-3	1-1	0-1	0-1	1-1	4-2	X	2-1		1-1	2-3
Weymouth	2-2	1-1	2-1	4-2	4-2	1-0	1-0	0-0	3-1		0-1	1-1	1-1	2-0	3-0	2-0	0-0	5-1	2-1	X		1-1	1-3
Witney Town		0-2	1-0	1-0	1-2	3-1	0-0	1-1	3-1	0-1	1-3	2-1	4-1	2-0	1-1	3-1	0-1	10-2	0-0	5-3		X	1-1
Yate Town	0-3	0-3	1-1	0-0	2-1	1-1	0-2		4-0	1-3	0-2	2-1	1-3	1-4	0-1	1-4	4-0	1-1	1-1	3-1		X	

TODAY'S POSER by ROY COUCH

When Simon Quail scored our second goal against Weston-Super-Mare last Saturday it was the 1000th goal we had scored in league matches solely in the Southern League. Can you name the player who scored our first ever league goal in the Southern League? Answer elsewhere in this programme.

In our last programme I said that during our two seasons playing home matches here at The Warren only one player had scored two hat-tricks on this ground in matches involving Wealdstone. I then asked you to name the player and who he scored his hat-tricks against. The answers are:- Dean Fosbury of Havant Town was the player. He scored 3 when Havant beat us 4-0 here last season and another 3 when Havant won 6-2 here a fortnight ago.

BEAZER HOMES LEAGUE - SOUTHERN DIVISION
(Up to & including Thursday 27th April 1995)

	Home			Goals			Away			Goals			PTS	WEALDSTONE HOME	RESULTS AWAY
	P	W	D	L	F	A	W	D	L	F	A				
Salisbury City	39	14	3	2	42	18	13	4	3	40	18	88	L1-2		
Baldock Town	39	14	5	1	44	22	11	5	3	38	20	85	L2-6	L1-2	
Havant Town	38	9	6	4	29	17	15	2	2	47	13	80	L2-6	D1-1	
Waterlooville	40	14	3	3	46	14	10	5	5	30	18	80	W2-1	L0-5	
Weston-Super-Mare	39	8	6	5	40	22	9	6	5	40	29	63	L4-6	L2-4	
Ashford Town	38	10	4	4	42	29	7	8	5	44	39	63	L4-5	L2-3	
WEYMOUTH	39	11	7	2	36	18	5	5	9	23	27	60		L1-5	
Bashley	38	9	6	4	35	19	7	5	7	20	19	59	W1-0	D2-2	
Newport (IOW)	38	9	2	7	32	29	8	5	7	30	31	58	L1-2	L1-2	
Witney Town	39	9	5	6	29	22	5	8	6	24	27	55	L1-2	W2-0	
Clevedon Town	40	10	5	5	47	27	3	8	9	22	35	52	D1-1	L2-4	
Tonbridge Angels	39	7	8	5	38	35	6	4	9	33	46	51	W3-2	W4-3	
Margate	39	9	2	9	36	33	5	4	10	21	34	48	L0-1	L1-3	
WEALDSTONE	39	6	4	9	36	42	6	4	10	34	46	44			
Braintree Town	38	6	7	6	29	26	4	5	10	28	39	42	W3-1	W3-0	
Fisher 93	39	4	10	5	28	29	5	5	10	25	37	42	D2-2	D2-2	
Yate Town	39	5	5	9	23	32	4	7	9	27	40	39	W2-0	L0-4	
BURY TOWN	38	5	5	10	31	43	5	2	11	24	35	37		W3-2	
Erith & Belvedere	39	4	5	10	19	39	5	4	11	26	48	36	L1-2	D1-1	
Fareham Town	39	4	3	12	22	40	4	5	11	19	47	32	W3-0	W2-0	
Poole Town	39	4	4	12	24	39	4	3	12	25	40	31	D2-2	L0-3	
Burnham	39	3	3	15	16	45	4	4	10	20	36	28	D1-1	W4-0	

CURRENT FORM (LAST SIX LEAGUE MATCHES)
(Up to & incl. Thu. 27th April 1995)

League	Position	Goals					PTS	CONSECUTIVE RUNS THIS SEASON			
		W	D	L	F	A		Best Run	Worst Run	Best Run Of	Worst Run Of
							Undefeated	Without	Successive	Successive	
							Run	A Win	Wins	Defeats	
Bashley	(8) ..	5	1	0	10	3	16...	10*	7	3	2
Baldock Town	..(2) ..	4	2	0	11	4	14...	26*	4	5	2
Havant Town	..(3) ..	4	2	0	14	6	14...	10*	2	6	2
Salisbury City	(1) ..	4	1	1	11	5	13...	18	3	6	1
BURY TOWN(18) ..	3	2	1	13	4	11...	4	6	3	6
Weston-S-Mare	..(5) ..	3	2	1	16	9	11...	13	4	3	3
Yate Town(17) ..	3	1	2	14	12	10...	6	12	2	7
Fisher 93(16) ..	3	1	2	12	10	10...	6	13	2	6
Fareham Town	..(20) ..	3	1	2	7	9	10...	7	15	3	8
Newport (IOW)	..(9) ..	2	3	1	5	4	9...	5*	3	3	2
Ashford Town	..(6) ..	3	0	3	11	16	9...	10	4	3*	3
Tonbridge(12) ..	2	2	2	9	8	8...	4	7	2	2
Waterlooville	..(4) ..	2	1	3	12	7	7...	11	4*	7	2*
WEYMOUTH(7) ..	2	1	3	10	12	7...	10	4	3	2
Burnham(22) ..	2	0	4	6	13	6...	4	10	1	4
Braintree Town	(15) ..	1	2	3	7	9	5...	4	8	2	3
Clevedon Town	..(11) ..	1	2	3	8	14	5...	6	6	4	3
Margate(13) ..	1	1	4	9	12	4...	4	6	2	3
WEALDSTONE(14) ..	1	1	4	12	20	4...	3	8	3	4
Witney Town(10) ..	0	2	4	7	13	2...	10	9	4	4
Poole Town(21) ..	0	2	4	4	12	2...	3	9*	2	5
Erith & Belv	..(19) ..	0	1	5	2	17	1...	4	9	2	5*

* = Run still continuing (Up to & including Thursday 27th April 1995)

ANSWER TO TODAY'S POSER

Our first ever league goal in a Southern League match was scored by GARY TOWNEND against Stourbridge in the First Division North at their War Memorial Athletic Ground on Tuesday 24th August 1971.

SUPPORTERS SCENE

Good afternoon ladies and gentlemen and welcome to our final two home matches of the season where we welcome the supporters of Weymouth and Bury Town.

As this season draws to a close so does my role as Secretary of the Supporters Club. I am glad to welcome back Dominic Whyley from his working(?) holiday in Australia. He will now be resuming his position as Secretary. When Dominic left last year it seemed he was going to miss one of our best seasons for a number of years but he quickly found out that this would not be the case. Our promotion challenge was effectively buried by our Saturday opponents, Weymouth, who we lost to 5-1 back in November. Conceding goals has not been a problem for us this season, 86 in total after last Saturday's game versus Weston-Super-Mare. This is an obvious area of concern for next season. On the plus side, however, we have been served up with some entertaining football and many fine goals. This is our tenth trophy-less season but if we can build on the best qualities of the squad we now have we should be in the running for a better season beginning in August, we just need a little more patience.

During yet another eventful season on and off the pitch the Supporters Club has been hard at work carrying out many activities including issuing memberships, selling souvenirs, providing the coach service, Junior Stones, quiz nights and selling 'Golden Goals' tickets. In addition we have assisted the Football Club in our 'Back to Harrow' campaign and the end of season 'Double Winning Celebration' dinner.

On behalf of the Supporters Club I would like to thank everybody who has assisted in any way during the season.

Supporters Coach: Our final coach for Monday night's match versus Bury Town will leave Harrow Civic Centre at 7.00pm with a further stop at St Albans and arrive at Harrow Station at approximately 7.10pm. Thankyou to everybody who has used this service over the last two years.

Souvenirs: A number of souvenirs are sold in the foyer at the entrance to the bar and are listed with prices below. Buy yours now while stocks last.
 Programme Binders : £2.00
 Scarves : £2.50
 Mugs : £2.00 (or £5 for 3)
 Double Winners T-Shirts: £5.00
 Polo Shirts : £15.00
 Car Stickers : 50p

Finally, anyone who feels they can contribute ideas or help the Supporters Club in any way would be most welcome. Have a good summer and see you all at Edgware in the next season.

NICK CONWAY

WEALDSTONE F.C. RESULTS 1994/95 SEASON (Arlington Gold Cup & Friendlies)

Date	Opponents	Comp.	Venue	Result	Goalscorers
Tue Jul 26	Egham Town	FR	Away	D2-2	Brathwaite, Wilson
Sat Jul 30	TRING TOWN	FR	HOME	W2-1	Brathwaite 2 (2 pens)
Mon Aug 1	Ruislip Manor	FR	Away	L0-2	
Thu Aug 4	Hillingdon Borough	FR	Away	W2-1	T. Buzaglo, Elward
Sat Aug 6	Farnborough Town	AGC	Away*	L0-2	
Sun Aug 7	Camberley Town	AGC	Away*	D1-1	Joseph
(After extra time. Score after 90 mins 1-1. Wealdstone won 4-2 on penalties)					
Tue Aug 9	Viking Sports	FR	Away	W5-1	Hayward, Findley 2, Schwartz, J.
Sat Aug 13	Rayners Lane	FR	Away	D1-1	M. Hill
Tue Sep 20	Edgware Town	FR	Away	D2-2	Drummy, Brathwaite
Thu Sep 29	Fulham	FR	Away	W1-0	Kent

* = Played at Aldershot Town F.C.

LEAGUE TABLES UP TO & INCL. SATURDAY 22ND APRIL 1995

PREMIER DIVISION

	P	W	D	L	GF	GA	GD	PTS
HEDNESFORD TOWN	40	27	9	4	94	46	48	90
CHELTENHAM TOWN	38	24	9	5	82	34	48	81
GLOUCESTER CITY	40	22	8	10	75	45	30	74
BURTON ALBION	39	19	13	7	52	37	15	70
LEEK TOWN	37	18	9	10	64	49	15	63
DORCHESTER TOWN	38	17	9	12	74	57	17	60
RUSHDEN & DIAMONDS	35	17	8	10	88	54	34	59
GRESLEY ROVERS	40	16	11	13	68	62	6	59
CAMBRIDGE CITY	38	17	7	14	55	49	6	58
WORCESTER CITY	39	13	13	13	42	33	9	52
HALESOWEN TOWN	40	14	10	16	79	75	4	52
HASTINGS TOWN	38	12	13	13	51	51	0	49
GRAVESEND & NORTHFT.	39	12	12	15	36	53	-17	48
CRAWLEY TOWN	38	13	8	17	57	67	-10	47
ATHERSTONE UNITED	39	11	11	17	48	64	-16	44
SOLIHULL BOROUGH	40	9	15	16	37	61	-24	42
CHELMSFORD CITY	37	12	5	20	50	56	-6	41
V.S. RUGBY	40	9	14	17	44	61	-17	41
SUDBURY TOWN	38	11	8	19	47	74	-27	41
SITTINGBOURNE	38	9	8	21	43	68	-25	35
TROWBRIDGE TOWN	38	7	12	19	37	64	-27	33
*CORBY TOWN	39	4	10	25	38	101	-63	21

(*Corby Town - one point deducted - ineligible player[s])

BEAZER HOMES LEAGUE CLUBCALL 0891-12-11-51

*Calls cost 39p per minute cheap rate, 49p per minute all other times.
1-9 Downham Road, London N1 5AA*

MIDLAND DIVISION

	P	W	D	L	GF	GA	GD	PTS
NEWPORT A.F.C.	40	29	6	5	103	36	67	93
TAMWORTH	39	23	7	9	93	60	33	76
ILKESTON TOWN	37	24	4	9	87	63	24	76
MOOR GREEN	39	22	8	9	99	60	39	74
BRIDGNORTH TOWN	40	21	9	10	73	49	24	72
BUCKINGHAM TOWN	39	19	12	8	52	35	17	69
NUNEATON BOROUGH	39	19	10	10	70	47	23	67
ROTHWELL TOWN	39	18	6	15	66	66	0	60
KING'S LYNN	40	17	8	15	72	60	12	59
RACING CLUB WARWICK	40	16	11	13	63	61	2	59
BEDWORTH UNITED	39	17	6	16	63	59	4	57
DUDLEY TOWN	40	15	10	15	59	67	-8	55
BILSTON TOWN	39	15	7	17	68	62	6	52
EVESHAM UNITED	40	13	9	18	53	54	-1	48
STOURBRIDGE	38	14	6	18	54	67	-13	48
HINCKLEY TOWN	38	13	7	18	52	69	-17	46
FOREST GREEN ROVERS	39	10	12	17	49	70	-21	42
SUTTON COLDFIELD TOWN	39	11	8	20	57	70	-13	41
REDDITCH UNITED	39	8	12	19	44	60	-16	36
LEICESTER UNITED	40	8	8	24	47	98	-51	32
GRANTHAM TOWN	40	7	9	24	52	90	-38	30
ARMITAGE	39	2	5	32	34	107	-73	11



The Originals.

DR MARTENS ARE SPONSORS OF THE SOUTHERN FOOTBALL LEAGUE CHALLENGE CUP

R Griggs Group Ltd, Wollaston, Northamptonshire, England

YOUR LOCAL COUNTRY MUSIC CLUB IS

HARROW COUNTRY MUSIC CLUB



HELD AT: CHURCHILL HALL, KENTON ROAD
KENTON, MIDDX.

PRESENTER: - JOHN RYAN
B.C.M.A. & C.M.A. AMERICA

no. 1 in London!
(1975 - 1994)
19 YEARS
Of Thursday Nights!

HAVE YOU JOINED THE BLUE RIBBON LOTTERY YET?
DETAILS FROM LAYNE PATTERSON IN THE CLUB OFFICE.

ALL RECORDS PLAYED TODAY
BY ROGER SLATER ARE AVAILABLE FROM

our price

ST ANN'S ROAD, HARROW, MIDDLESEX.
THE NO 1 ENTERTAINMENT SHOP IN HARROW



WEALDSTONE FC
SUPPORTERS
CLUB
FOUNDED 1958

HEADQUARTERS: THE WARREN, BEACONSFIELD ROAD, HAYES, MIDDX. UB4 0SL
CORRESPONDENCE TO:

TENTH ANNIVERSARY PRESENTATION NIGHT

As most supporters will know this season marks the tenth anniversary of Wealdstone Football Club's greatest year. It was in season 1984/85 that the team managed by Brian Hall won both the Gola League (now called the GM Vauxhall Conference) and the FA Trophy beating Boston United 2-1 in the final at Wembley Stadium in front of more than 20000 spectators, thus becoming the first club to win the "non-league double". In addition Wealdstone were also to win that seasons Middlesex Senior Cup beating local rivals Enfield 4-2 in the final.

To celebrate the tenth anniversary of this event Wealdstone Supporters Club together with Wealdstone Football Club are holding a celebration dinner on the evening of Sunday 7 May 1995 (a bank holiday weekend). This will take place at the home of Wasps Rugby Club, Repton Avenue, Sudbury.

As well as celebrating this important landmark in our distinguished club's history we will also be presenting the awards for the current season 1994/95. Accordingly, player of the year slips are now available from a member of the Supporters Club Committee, or in the foyer area on the way into the bar before any home game.

This promises to be a great night especially as many of the "Double squad" have already confirmed that they will be attending. In addition to the celebrations and meal there will also be a disco, an anniversary raffle and it is hoped for one or two other surprises. Tickets are priced at £20 per person.

However, numbers are strictly limited and therefore I would urge you to book your places for this evening as soon as possible. A slip is included at the bottom of this page to help you book and this should be given to either Howard Kraiss or Layne Patterson as soon as possible.

Howard Kraiss
Chairman, Wealdstone FC Supporters Club

.....
PLEASE TEAR OFF AND GIVE TO EITHER
HOWARD KRAISS OR LAYNE PATTERSON
.....

..... people will be attending the tenth anniversary presentation dinner at Wasps Rugby Club, Repton Avenue, Sudbury on Sunday May 7th, and I enclose £..... (£20 a ticket).

Names:

Address to send tickets:

Telephone:
7.00 PM FOR 7.30 PM PROMPT

DRESS LOUNGE SUITS

PRESIDENT: T. VERRALL
CHAIRMAN: H. KRAISS; VICE CHAIRMAN: N. DUGARD; SECRETARY: D. WHYLEY; TREASURER: S. RAWAL
JUNIOR STONES SECRETARY: P. MCGREAL

BEAZER HOMES LEAGUE (SOUTHERN DIVISION)
HOME LEAGUE ATTENDANCES 1994/95 SEASON
(Up to & including Saturday 22nd April 1995)

	Played	Aggregate	Best	Worst	Average Per Game
WEYMOUTH	20	16249	1283	391	812
Tonbridge	19	8766	888	290	461
Ashford Town	17	6425	462	283	377
Salisbury City	19	6387	585	207	336
Clevedon Town	19	5712	807	116	300
Weston-S-Mare	18	5087	475	176	282
Bashley	18	4890	495	151	271
Newport (IDW)	17	4520	409	161	265
Margate	19	4971	368	138	261
Havant Town	18	4681	602	142	260
Waterlooville	20	5129	720	124	256
Baldock Town	20	4416	396	110	220
WEALDSTONE	19	3645	254	164	191
Yate Town	19	3475	408	110	182
Braintree Town	18	3234	254	118	179
Witney Town	20	3206	289	66	160
Poole Town	19	2870	346	76	151
Fisher 93	19	2529	201	88	135
BURY TOWN	20	2683	240	100	134
Fareham Town	18	2341	279	79	130
Burnham	21	2518	158	88	119
Erith & Belv.	19	2088	146	62	109

Total Matches: 416 Total Attendances: 105872
Average Attendance Per Match: 254

BEAZER HOMES LEAGUE (SOUTHERN DIVISION)
TOP & BOTTOM LEAGUE ATTENDANCES 1994/95 SEASON
(Up to & including Saturday 22nd April 1995)

Highest		
1283	Weymouth v. Margate	26/11/94
1245	Weymouth v. Waterlooville	15/10/94
1232	Weymouth v. Bashley	26/12/94
1052	Weymouth v. Fareham Town	31/12/94
1024	Weymouth v. Havant Town	10/12/94
Lowest		
62	Erith & Bel. v. Yate Town	5/11/94
66	Witney Town v. Fisher 93	8/10/94
67	Erith & Bel. v. Bashley	10/ 4/95
71	Erith & Bel. v. Clevedon Town	18/ 2/95
76	Poole Town v. Margate	22/ 4/95
79	Fareham Town v. Witney Town	28/ 3/95
84	Fareham Town v. Fisher 93	3/12/94
85	Fisher 93 v. Newport (IDW)	8/11/94
85	Poole Town v. Weston-S-Mare	14/ 3/95

BEAZER HOMES LEAGUE (SOUTHERN DIVISION)
LEAGUE & DR. MARTENS CUP LEADING GOALSCORERS
(Up to & including Saturday 22nd April 1995)

S. Duggy (Margate)	32
S. Devine (Fisher 93)	30
D. Arter (Ashford Town)	27
S. Lovell (Salisbury City)	25
M. Stanton (Ashford Town)	25
S. Penny (Clevedon Town)	23
N. Selby (Waterlooville)	23



are pleased to support

WEALDSTONE F.C.

We have two teams playing in
the Marathon League and organise

many social functions
(details will appear here)

NEW PLAYERS ALWAYS WELCOME

Contact:

PETE WORBY 0923 442647
or MARK STOREY 081 723 1084

Cannon Cinemas

5 Screen Entertainment in Harrow
Supporting our Local Team

Sheepcote Road
Harrow HA1 1JN

Stallion Road
Harrow HA1 2TY

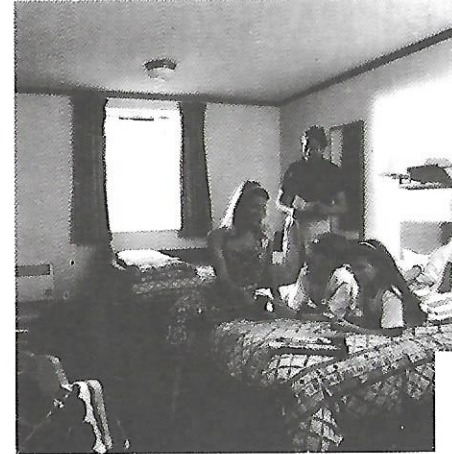
081 427 1946 24hr Recorded Info 081 427 1743
081 970 6035 Booking Hotline 081 970 6036
081 863 7261 General Enquiries 081 863 7143

COMING SOON:

SEE
LOCAL PRESS
FOR DETAILS

The Grapes Beefeater & Travel Inn

362 UXBRIDGE ROAD,
HAYES, MIDDX UB4 0HF
TEL: 081 573 7479. FAX: 081 569 1204



£33.50
PER ROOM
PER NIGHT



Beefeater
Restaurant & Pub



A New Kind of Hotel

ACE AWARDS



ACE AWARDS
24 Hour Tel. Service
081 206 1339

NO. 1
FOR SOCCER
TROPHIES

1987/88

SUPPLIERS OF TROPHIES TO WEALDSTONE F.C.

- Exclusive designs; complete personalisation.
- Full engraving service on the premises.
- Keenest prices direct from the manufacturers.
- Largest trophy showroom in the country.
- Send for FREE full colour brochure showing the most comprehensive selection of trophies in the United Kingdom.

Renamel House, Cumberland Road,
Stanmore, Middlesex HA7 1QH

SIDELINES BY NEALE HARVEY

As more and more football clubs from all levels are being squeezed by financial difficulties our own situation at Wealdstone is thrown into much sharper relief. We are not to be allowed a transfer into the more economically sound waters of the Diadora and must continue to cover the extra territory demanded by Beazer Homes football. Wealdstone, however, are no longer a lone voice in the debate over league organisation and similar noises have come from Leek Town and Tonbridge who are also questioning their future survival prospects. Allied to the fact that Dunstable, Canterbury and Andover have pulled out of the Beazer in the last two seasons and that, on a wider level, Halifax Town, Gillingham and Exeter could go out of business at the end of this season how much longer will it be before some radical re-organisation is facilitated.

This is not a Beazer Homes problem, but a national one that needs addressing very quickly indeed. How much longer can we continue to send Torquay and Exeter to Hartlepool and Darlington in Division Three, Plymouth to Rotherham or Blackpool in Division Two or Dover to Gateshead in the Conference? Leek Town to Hastings, Margate to Yate, Weymouth to Bury? These are quite simply not realistic leagues to operate in at the present time. Clubs are struggling to afford the travelling costs and struggling to pay players who themselves are becoming less willing to take time off work in order to fulfil playing commitments. And the supporters, remember them? Away support at Wealdstone this season has been negligible. The Waterlooville "eight" were followed by the Havant "five" and that has been par for the course with so few local derbies to help generate local passions. I went to Macclesfield against Dover about three months ago and Dover had twelve supporters!

So, I can state these obvious facts, but do I have an answer? Yes, I believe I do and here goes.

The only two national divisions I would retain based on financial viability would be the Premiership and the current Endsleigh Division One which would retain 20 and 22 clubs respectively. Below this would be Endsleigh League Division Two consisting of three leagues, of 20 clubs each, covering The North, The Midlands and The South. Division Two will need to incorporate the 10 Conference clubs, subject to ground grading of course. Based on the league situation two weeks ago, Div. Two South would include Swindon Town, Bristol City, Brentford, Bristol Rovers, Oxford, Wycombe, Brighton, Cambridge, Bournemouth, Plymouth, Orient, Barnet, Fulham, Colchester, Torquay, Northampton (borderline), Gillingham, Exeter, Woking and Stevenage. The winners would earn automatic promotion to National League Div. One with the runners-up playing off along with the Midland and Northern runners-up. Three go down from Div. One and the fourth from bottom club plays off with the three runners up.

After Division Two would come Division Three. Again, split into North, Midlands and South, this would incorporate the lower Conference sides along with the bulk of the Unibond, Beazer and Diadora Premier sides. These league identities could be retained. Again, as an example, based on status two weeks ago, the Midland Division Three would contain Bromsgrove, Telford, Merthyr, Stafford, Hednesford, Cheltenham, Gloucester, Burton, Leek, Gresley, Worcester, Halesowen, Solihull, Atherstone, Rugby, Corby, Boston, Buxton, Witton and Colwyn Bay. Once more, full relegation, promotion and play offs can be programmed in. Are you getting the idea now? Not so daft is it?

Division Four is slightly more problematic because the sheer weight of senior Southern non-league clubs requires Div. Four South to be split into three. You still end up with five divisions of 20 however and it still makes sense. Div. Four North contains most of the current Unibond One. The Midland Division is basically your current Beazer Midland whilst Division Four South will contain clubs from the bottom half of the Diadora and Beazer Premier along with the Beazer Southern and Diadora One clubs. By splitting Div. Four South into three you end up with the following economically viable set up. South "West" contains Trowbridge, Wokingham, Salisbury, Waterlooville, Havant, Weymouth, Witney, Weston, Clevedon, Newport IOW, Bashley,

(Continued on next page)

PETER'S FISH BAR

NOTED FOR QUALITY & QUANTITY

* * *

1 THE PARADE
HEADSTONE DRIVE
HARROW MIDDLESEX
Telephone: 081 427 1330

Fresh Fish, Bar-B-Q Chicken, Pies Etc.

PERSONAL MASSAGE

Aromatherapy + spa
081- 421 0874
11am-8pm 7 days

SUMMERHOUSE SAUNA Watford Please phone

for details
0923 245112

The

WEALDSTONE FOOTBALL CLUB

BLUE RIBBON

DAILY CASH DRAW

IN CONJUNCTION WITH NORTHWICK PARK HOSPITAL
CHILDREN'S CENTRE APPEAL.

WIN £400.00 PER WEEK

as follows

WIN £ 50.00 EVERY MONDAY
WIN £ 60.00 EVERY TUESDAY
WIN £ 65.00 EVERY WEDNESDAY
WIN £ 75.00 EVERY THURSDAY
WIN £150.00 EVERY FRIDAY

Plus many consolation prizes

Contact Layne Patterson 081 813 7800

NOW!!

CHANCE TO WIN £100,000

F S P G



Accountants to Wealdstone F.C.

CHARTERED ACCOUNTANTS

FIRST Floor, Russell Square House

10/12 Russell Square, London WC1B 5EL

Telephone: 071-637 4444 Fax No: 071-323 2857

Yate, Poole, Fareham, Worthing, Basingstoke, Aldershot, Abingdon, Newbury and Bognor. South "Central" would contain Walton, Dulwich, Yeading, Hendon, Crawley, Sutton, Chesham, Marlow, Wealdstone, Burnham, Boreham Wood, Chertsey, Staines, Maidenhead, Uxbridge, Wembley, Tooting, Ruislip Manor, Whyteleafe and Berkhamstead. South "East" would contain Cambridge City, Hastings, Grays, Purfleet, Sudbury, Bishops Stortford, Chelmsford, Sittingbourne, Baldock, Ashford, Margate, Tonbridge, Braintree, Erith, Fisher, Bury, Billericay, Heybridge, Barking and Leyton. Again, full promotion and relegation can be programmed in and travelling is minimised by geography.

It's all fairly radical then but it's amazing how few clubs could claim to be inconvenienced by such a set up. By extending the Endsleigh League you actually create a greater opportunity for ambitious clubs to progress whilst maintaining a sound financial base throughout the league structure.

The cons? There aren't many really. The major hurdle to change will be splitting up the Conference, Beazer and Diadora power bases. The Conference, in particular, has been a success but it is no longer realistic from the travelling and cost viewpoint.

There would be a settling down period of about one season whilst clubs assimilated themselves into new surroundings and of course, promotion and relegation issues will not always fall into nice, neat place at the end of each season.

However, I put forward my proposal as a realistic one and if it means the Halifax Town's could survive, I rest my case.

Hopefully Alan Couch's trusty typewriter will allow me the indulgence of a few extra lines in order to complete another season of "Sidelines". Undoubtedly, this has been a most frustrating one on the playing side which is, after all, the reason we all watch Wealdstone in the first place.

If I've said it once I'll say it again. We must get the pre-season sorted out much earlier than we have done of late. A settled squad, training regularly together, is the only way we can ever hope to make a challenge in this league. And the training? Sorry, but once a week, if that, is simply not good enough. If SFC Wealdstone can manage to get something sorted out, surely Wealdstone can? The pre-season games we had this season wouldn't have been so bad if the players who started were likely to play through the year. Only two players, Terry Birch and Billy Hudson played in our opening league match and also appeared against Burnham last week!

Undoubtedly, we have some potential and of the current squad I would get the Buzaglo's, T and R, Browne S, Biggins and Hall signed up tomorrow. Others need to prove their fitness and commitment to the cause. Defensively, we've had a nightmare and will probably be averaging over two goals against in the league, which is pretty pathetic. And how many more free headers do we have to concede?

So a difficult year comes to a close with around a hundred supporters due to make the trip to Salisbury next week. I think we are due some reward by being party poopers?

LEAGUE NEWS

DEVINE NEWS FOR FISHER

Sean Devine, who notched a hat-trick in Fisher's 4-0 London Challenge Cup Quarter Final victory over Uxbridge, grabbed all four of the Bermondsey Boys goals in their 4-3 semi-final win over Leyton. After going two goals down in 22 minutes, a divine hat-trick from Sean took the game to extra-time. Devine's fourth, in the 120th minute, earned the Fish their first Final place since appearing in the London Senior Cup Final in 1989.

Devine, who started the season with Erith & Belvedere, has been attracting the attention of a large number of Football League clubs of late. West Ham United, Queens Park Rangers, Peterborough United and Leyton Orient have all been watching the Southern Division's prolific goal scorer. But last weekend Devine flew out to Larnaca for talks with a top Cypriot side.

Mike Vincent of 'Metal Mode' has unearthed an article written by Phil Sugden that appeared in one of our programmes during the 1983/84 season. Phil, who passed away a few years ago, was renowned for getting his facts wrong when writing about Wealdstone football Club. If Phil were alive today I wonder what he would have to say about his predictions of eleven years ago.

LEAGUE STATUS WILL COME HERE . .

says PHIL SUGDEN

(former Sports Editor, Harrow Observer)

WHEN, on a dark winter's evening almost exactly 83 years ago, half-a-dozen local football lovers met in on gentleman's front room to discuss the possible formation of Wealdstone Football Club, those six men could, surely, in their wildest dreams, not have visualised that less than 90 years later the club would be playing in the Football League.

Yet, I am convinced that within the next three to five years, that will be the case.

Yes, I am absolutely certain that Lower Mead **WILL** stage the scene for Wealdstone's debut in the League withing that period of time.

The stage is set; the portents are right; Stones' stars are in the ascendancy at exactly the right moment.

The administrators who worked hard and long to set up the Alliance Premier League, saw their new organisation as a "Feeder" to the Football League. Many die-hards connected with the League thought otherwise; they always have! But, many, and mostly the younger, more go-ahead chairmen of the League club's knew that the Alliance would not only provide a "Feeder" — it was here to stay as an integral, indeed, necessary part of the League set up.

As I write, no fewer than 40 of the current 92 League clubs are in dire straights; desperately short of cash; many mortgaged to the hilt, most pondering from Sunday to Thursday each week wondering where the current week's wages bill will come from, whether the Bank Manager will allow — or be allowed — to meet the weekly cheque.

Many clubs exist alongside the spectre of the banks, guarantors and, above all, the speculators who could make fortunes from the sale of land now used as League grounds, waiting to move in.

League clubs will go bankrupt before the end of this current season, more will go in the next two or three years.

And clubs like Wealdstone will move in. They are ready and waiting because they are keeping their houses in order, are well administered, have the necessary finance to back their plans, and have built their houses on rock, not sand.

Clubs like Wealdstone, who can produce good players and transfer them at a profit; who play attractive football; produce good results, can face the future with confidence during the coming years as many fashionable clubs go to the wall.

One thing is needed to keep Lower Mead on the right course. If every loyal supporter will make it his life's task to bring at least one more regular supporter to the ground, keep him there and then encourage that new supporter to bring his friend, the gates will grow and flourish.

Given the support, the management is dedicated to producing the goods.

In my declining years, my great ambition is to be able to travel down to London and attend Wealdstone's first game in the Football League — and I think I shall live to see that day.

Colin Pope writes:

PHIL needs no introduction to the majority of Wealdstone fans, for he seldom missed a home match until his retirement 7 years ago. Now living in a lovely country setting outside Market Deeping (Lincs), we didn't always agree with what Phil wrote about us, but yearn for the sort of publicity he gave us!

WEALDSTONE F.C. JUNIORS SUNDAY MORNING "MINI-LEAGUE"

The Wealdstone F.C. Juniors Sunday morning "Mini-League" football scheme for children aged 6-8 years has now re-commenced at the Old Lyonians Sports Ground in Pinner View Harrow, Middlesex after its winter break.

Registration is at 10.30am each Sunday morning and the annual registration fee is £1 with a weekly fee of £1.50 per child. For details of the "Mini-League" scheme, ring Dave Albert on (0181) 203 5060.

Why not come along and join us for this morning of fun and enjoyment.

HISTORY OF BURY TOWN FOOTBALL CLUB

Bury Town Football Club play at Ram Meadow, Cotton Lane, Bury St Edmunds in Suffolk. Their stadium has an estimated capacity of 3500 with covered accommodation for 1500 spectators including seating for 300. The Club was formed in 1872 and was one of the founder members of the Suffolk County Football Association in 1885. Prior to changing the name to Bury Town the Club was known as Bury United playing initially in the Norfolk & Suffolk League and then the Essex & Suffolk Border League. The Blues, as they are known, moved up into senior football by becoming founder members of the Eastern Counties League in 1935 and gained their first honour when they won the Suffolk Senior Cup in 1936/37, a trophy they retained for the next two seasons. 1937/38 saw the Club achieve its best pre-war League position of runners-up before the outbreak of the Second World War caused the competition to be suspended in 1939. Bury Town won the Suffolk Senior Cup for the fourth time in 1945 before Eastern Counties League action resumed in 1946.

In 1958/59 Bury Town became the first ever winners of the Suffolk Premier Cup and went on to retain the trophy for the next three seasons. In 1961/62 the Eastern Counties League Cup was won for the first time and then in 1963/64 the Club won the Eastern Counties League Championship for the only time in its history, recording an excellent 'treble' by also winning the Eastern Counties League Cup again and the Suffolk Premier Cup for the fifth time. This success prompted the Club to join the Metropolitan League in 1964 when once again they won the Suffolk Premier Cup. During the 1965/66 campaign Bury Town recorded another fine 'treble' by winning the Metropolitan League Championship, the Metropolitan League Professional Cup and, for the seventh time, the Suffolk Premier Cup. In 1967/68 the Blues won the Metropolitan League Cup for the only time and finished runners-up in the League. The Metropolitan League Championship was won for a second and last time in 1968/69 when the Club also reached the First Round Proper of the FA Cup for the only time in its history. 3000 spectators saw the Blues hold third Division leaders AFC Bournemouth to a goalless home draw at King's Road, but unfortunately lose the replay by a 3-0 margin at Dean Court.

1970/71 was the Club's last season in the Metropolitan League when they finished as runners-up and also lifted the Suffolk Premier Cup for the eighth time. In 1971/72 Bury Town moved into the Southern League but disappointing results and high travelling costs prompted an unpopular but necessary return to the Eastern Counties League in the 1976/77 season. A year later the Blues left their King's Road ground and moved to Ram Meadow where they again won the Suffolk Premier Cup.

In 1986/87, which proved to be Bury Town's last season in the Eastern Counties League until their Reserve Team was admitted in 1991, the Club enjoyed another good run in the FA Cup reaching the Fourth Qualifying Round of the competition. The Blues were drawn away to Gola (Conference) League leaders Enfield and forced a 0-0 draw before 842 spectators. A crowd of over 2500 assembled at Ram Meadow for the replay (to date a ground record) but Bury were unable to pull off a giant-killing result as the visitors narrowly sneaked home by a 1-0 margin.

In the 1987/88 season Bury Town rejoined the Southern (Beazer Homes) League and have since experienced mixed fortunes in the Southern Division. Promotion to the Premier Division at the earliest opportunity is an important priority for the Club with Conference League status its long term objective.

BURY TOWN F.C. - PEN PICTURES - 1994/95 SEASON

ROBBIE REDDING (Goalkeeper): Joined the Blues in February of this year from Jewson League side Clacton Town. Has quickly become a favourite of the fans.

MARK SMITH (Midfield): Joined Bury this season and quickly established himself in the First Team at Beazer Homes level.

SCOTT YOUNG (Forward): Now in his second spell with the Club having rejoined in the summer after two seasons away. Top goalscorer with 15 goals.

(Continued on next page)

JUMA PRINTING & PUBLISHING

ARE PROUD TO SUPPORT
WEALDSTONE F.C.

For low cost leaflets, booklets, short run magazines and
paperback books plus all your business stationery
and discount full colour printing

CALL US TODAY

LOW PRICES - TOP QUALITY - FAST SERVICE - NATIONWIDE DELIVERY

Tel. 0742 720915 / Fax. 0742 786550

or write to 44 Wellington Street, Sheffield S1 4HD

Look out for the following new titles in 1994/95:

Gladys Protheroe - Football Genius by Simon Cheetham

Who persuaded Alf Ramsey to include Geoff Hurst in '66?

What really went on in that Bogota jewellers?

And why did Gazza burst into tears in the 1990 World Cup semi?

This book reveals all **Price £5.95**

Football and The Commons People - edited by David Bull & Alastair
Cambell

MPs of all persuasions writing about why football is more interesting
than politics - royalties to the Child Poverty Action Group **Price £9.95**

**Plus Where's The Bar? - The interesting (and irregular!) non-league
magazine will return**

C.P. PROMOTIONS

After Dinner Speakers * Sportsman's Dinners * Comedians
Personal Appearances * Music * General Fund-raising

Offices in Hampshire & London

Telephone: 0256 - 59313 Telephone: 081 - 423 3105

THE WOODLAND

Tony & Anne Hayes

Welcome All Stones Fa

Traditional Ales & Foo

Served All Day

29 St John's Road,
Isleworth

SUPPORTING WEALDSTONE FOOTBALL CLUB

BUILDERS **TIMBER &**
MATE **BUILDERS**
MERCHANTS

FOR TRADE ENQUIRIES
TEL: 081 421 5200

HAZELWOOD PRESS

are proud to
support
WEALDSTONE F.C.

Richard Graham
0604 715834

Windsorian

Windsorian Coaches

Travel in the same style
as the
Wealdstone F.C. Team

Contact:-
Windsorian Coaches
103 Arthur Road
Windsor Berks, SL4 1RU

Tel:- (0753) 860131
Fax:- (0753) 850831

BURY TOWN PEN PICTURES (continued)

ANTHONY GILL (Midfield): An attack minded player who joined Bury this season from Lowestoft Town of the Jewson League. Was originally on the books of Colchester United and Ipswich Town and may yet prove those clubs were wrong to release him.

MIKE HENRY (Defender): A talented and versatile full-back who is equally at home in midfield or even forward. Now in his second spell at Ram Meadow, having rejoined the Club in 1993, Mike has represented the County of Suffolk and was a member of Sudbury Town's F.A. Vase side at Wembley in 1989 before moving on to Jewson League Harwich & Parkeston.

STEVE HUBBARD (Midfield): Vastly experienced and versatile performer who likes to get forward at every opportunity. A fully qualified F.A. Coach who joined the Blues at the start of last season following a spell as player/manager of Jewson League Haverhill Rovers. Prior to that he played for Sudbury Town, Chelmsford City, Cambridge City and Saffron Walden Town. A County player and Bury Town Club Captain. Was last season's Player's 'Player of the Year'.

KEVIN LAYNE (Forward): An unselfish striker who creates goals as well as scoring them. Was joint top scorer of the S.I.L. League last season and is looking forward to keeping up the rate at senior level.

ANDY TAYLOR (Defender): One of the several powerful and talented centre-backs available to the Blues this season. A local lad with bags of potential and could go far. Signed in at the Ram Meadow this season from Long Melford of the Essex & Suffolk Border League.

DALE VINCE (Midfield): Another promising youngster who signed for the Town this season. Was last season's Player of the Year for the S.I.L. League and regularly represented Suffolk County Under 18's. His style has been likened to that of Peter Beardsley.

DARREN PRIOR (Forward/Midfield): Signed from Jewson League team Wroxham in February. Darren is also in his second spell with the Club. Has the sweetest of left foot's.

DAVID BROWN (Forward): Signed at the beginning of the season from Haverhill Rovers but left for Saffron Walden due to transport problems. Returned recently and is now settled in the team.

SIMON ROGERS (Defender): Joined the Blues at the end of 1994. Simon regularly represents the Royal Air Force and is based at Honnington. Has a steadying effect at the heart of the defence.

STEVE CALLINAN (Forward): Another of the promising youngsters at the Club, Steve recently scored his first goal in the Beazer Homes League. Previously with Colchester United.

OUR RECORD AGAINST BURY TOWN

Southern League				Summary of League Encounters						
Season	Home	Away		P	W	D	L	F	A	
1971/72 (First Div. North)	W2-1	W1-0	Home	3	3	0	0	10	3	
1992/93 (BHL Southern Div.)	W3-1	W4-0	Away	4	3	0	1	8	6	
1993/94 (BHL Southern Div.)	W5-1	L0-4	Total ...	7	6	0	1	18	9	
1994/95 (BHL Southern Div.)	Today	W3-2								

(Wealdstone's score given first)

Southern League Cup
1974/75: First Round, First Leg : Wealdstone won 7-1 (at Lower Mead)
First Round, Second Leg: Wealdstone won 2-1 (at Kings Road) (Aggregate 9-3)

ANY OF THESE JOBS, BUT WITH WINGS ON.

NON-COMMISSIONED ENTRY

The RAF needs men and women now for some of the most rewarding careers in Britain (and they may give you the chance to work abroad too). The jobs are exciting and the pay is good. Training is excellent and can lead to further Educational Qualifications. There are many sound Trades available for non-commissioned Service, ranging from Technical to Administration Support.

OFFICER ENTRY

For Officer Entry you will require a minimum of 5 GCSE's at grade C, or above, including Maths and English Language, and 2 acceptable A Levels or equivalent. Officer vacancies include Pilot, Navigator, Air Traffic Control, Administration and many other Branches.

For more information call in for an informal chat to:
Royal Air Force Careers Information Office
180a Cranbrook Road, Ilford, IG1 4LR
or telephone 0181 518 1411



ROYAL AIR FORCE

WE ARE EQUAL OPPORTUNITIES EMPLOYERS UNDER THE RACE RELATIONS ACT AND WELCOME ENQUIRIES AND APPLICATIONS FROM ALL ETHNIC GROUPS

STONES PREDICT-A-SCORE 1994/95 SEASON
(39 MATCHES PLAYED, INCLUDING NEWPORT (IOW), TUESDAY 25TH APRIL 1995)

As this is our last programme your predictions for our last three matches appear below. Reading left to right they are for Weymouth, Bury Town and Salisbury City.

	Predicted Result/Score Today	Correct Result/Score (3 pts.)	Correct Result Only (1 pt.)	Total Points
1. PETER WORBY	(2-1 3-0 0-1)	7	13	34
2. BOB BANGS	(3-2 5-1 0-1)	6	13	31
JOHN CURTIN	(1-2 1-2 1-2)	6	13	31
SUDHIR RAWAL	(2-0 5-0 1-1)	6	13	31
5. JON IRVINE	(2-1 4-1 1-0)	4	16	28
6. NEIL ALLEN	(2-1 1-1 1-0)	4	14	26
ROY COUCH	(1-1 4-0 1-2)	4	14	26
RAY KEMP	(2-2 4-1 0-3)	4	14	26
KEN WIGGINS	(2-3 5-1 1-4)	4	14	26
10. DAVID ALBERT	(2-0 5-0 2-1)	5	10	25
DON CROSS	(2-1 3-1 1-3)	5	10	25
MARK McMANUS	(1-2 4-0 3-0)	4	13	25
13. JEREMY ALBERT	(1-1 3-0 1-1)	4	12	24
STEPHEN BIRD	(3-2 5-0 1-2)	3	15	24
ALAN COUCH	(1-3 3-0 0-3)	3	15	24
NORMAN EVELEIGH	(0-2 0-3 1-2)	4	12	24
JOHN HANCOCK	(2-1 4-1 1-2)	4	12	24
CHARLIE PILKINGTON	(1-1 4-0 0-1)	1	21	24
JACKIE PULLIN	(1-1 1-0 2-1)	4	12	24
20. PETER DREW	(2-0 4-0 1-1)	1	20	23
NICK DUGARD	(2-0 2-1 0-3)	3	14	23
KIRSTY JENKINS	(2-1 2-1 3-1)	5	8	23
23. GRAHAM CLARK	(4-2 4-2 1-2)	2	16	22
RON MOORE	(1-1 5-1 0-1)	3	13	22
JOHN QUANTRILL	(2-1 2-1 1-2)	3	13	22
26. LORI GALE	(2-0 3-0 3-1)	2	15	21
ALAN MOORE	(1-3 2-0 0-0)	3	12	21
DAVE PARISH	(3-0 5-1 2-1)	4	9	21
LAYNE PATTERSON	(1-0 3-0 27-0)	1	18	21
VAL SHEARER	(2-1 4-0 1-1)	1	18	21
LIZ WIGGINS	(1-0 1-1 1-0)	4	9	21
32. A.W. LEA	(1-1 2-1 1-3)	3	11	20
PATRICIA RONEY	(2-0 2-0 1-1)	3	11	20
PAUL RUMENS (1)	(3-1 5-0 1-3)	3	11	20
STEEVEN SHARPE	(1-3 1-1 0-1)	3	11	20
36. ANDY HIBBS	(2-0 4-0 0-2)	4	7	19
HOWARD KRAIS	(1-2 5-0 0-2)	1	16	19
TONY PLATT	(1-1 5-0 1-2)	1	16	19
PAUL RUMENS (2)	(2-1 4-0 1-1)	2	13	19
TONY WALLER	(1-2 4-0 0-2)	2	13	19
ROGER WATSON	(4-0 4-0 0-0)	2	13	19
42. TONY DREW	(1-0 5-0 0-2)	3	9	18
STEVE FOSTER	(3-1 5-1 1-3)	1	15	18
STEVE HIBBERD	(2-0 6-0 3-1)	1	15	18
NICK WOOLFORD	(2-0 0-0 1-2)	2	12	18
46. JOHN BURROWS	(2-2 4-1 0-1)	2	11	17
GRAHAM JONES	(1-2 5-1 1-3)	1	14	17
HELEN KIRBY	(2-1 4-0 0-1)	2	11	17
PAT MURPHY	(1-2 1-2 0-2)	1	14	17
JON TAFFEL	(1-2 4-1 1-2)	2	11	17
51. SATEESH KHANNA	(1-0 4-0 0-3)	0	16	16
DAVID TODD	(2-0 3-0 1-1)	1	13	16

(Continued on next page)

STONES PREDICT-A-SCORE 1994/95 SEASON (continued)

	Predicted Result/Score Today	Correct Result/Score (3 pts.)	Correct Result Only (1 pt.)	Total Points
53. MARK CHAMBERLAIN ...	(2-1 4-1 0-1)	2	9	15
PAUL FRUIN ...	(2-1 5-1 3-0)	2	9	15
MICHAEL PULLIN ...	(2-0 6-0 1-2)	2	9	15
JENNY SAVILLE ...	(1-0 2-1 0-2)	1	12	15
DUNCAN TOWELL ...	(0-2 5-1 0-2)	0	15	15
58. NICK CONWAY ...	(2-0 3-0 0-2)	1	11	14
MATT DOWNES ...	(0-0 6-0 0-3)	1	11	14
MARK FOWLER ...	(2-1 2-1 2-1)	1	11	14
KIP HEWITT ...	(2-2 1-1 4-0)	2	8	14
ROB SAVILLE ...	(0-2 3-1 0-3)	2	8	14
JOAN WALLER ...	(3-2 0-2 2-3)	1	11	14
DOMINIC WHLEY ...	(3-1 3-1 3-1)	1	11	14
65. QUENTIN FOX ...	(1-0 4-0 2-2)	1	10	13
DAN HELEN ...	(1-1 4-1 1-1)	1	10	13
BARBARA ROBSON ...	(2-1 1-1 1-2)	1	10	13
ROGER SLATER ...	(2-0 4-0 2-2)	1	10	13
69. PAUL McGREAL ...	(0-0 4-0 5-0)	2	6	12
DAVID H. WOODS ...	(2-0 3-0 0-2)	0	12	12
71. CHARLIE FOWLE ...	(2-3 0-1 0-1)	0	11	11
72. MARTIN BURROWS ...	(3-1 2-1 0-2)	1	7	10
CHRIS RUDDOLPH ...	(0-0 4-0 0-0)	0	10	10
74. JOE McKEEVER ...	(2-2 1-0 3-2)	1	6	9
ARTHUR ROGERS ...	(3-2 4-1 1-1)	0	9	9

Wealdstone score given first. All predictions were made prior to the start of the season. Prize money at the end of the season will be:- Winner £160; Runner Up £80; Third Place £50; Fourth Place £30; 75th place - A Mystery Booby Prize.)



THE SPRINGHEATH

P R I N T

CAPITAL FOOTBALL LEAGUE

***** PLEASE NOTE CHANGE OF KICK OFF TIME *****

PRESIDENT'S CUP FINAL

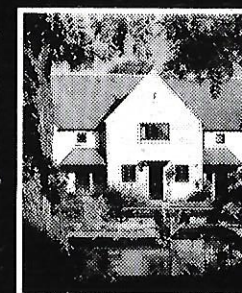
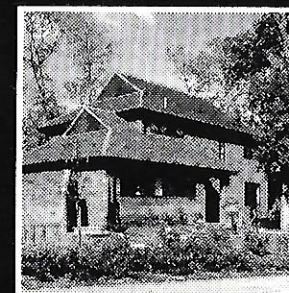
BANK HOLIDAY MONDAY, 8TH MAY 1995

BRENTFORD v. WEST HAM UNITED

TO BE PLAYED AT BRENTFORD F.C., GRIFFIN PARK, BRAEMAR ROAD, BRENTFORD

KICK OFF IS NOW 11.30 A.M.

HOMES WIN



AWARD WINNING HOMES THROUGHOUT THE

Beazer Homes are proud to be associated with the league during the Centenary celebrations and wish each Club success throughout the season.



in the country with over 200 years tradition, craftsmanship and experience built into every - it's true to say we really are league of our own.

As one of the largest housebuilders

Beazer Homes

AWARD WINNING QUALITY

OFFICIAL SPONSORS FOR THE EIGHTH YEAR

Printed By Printcrafts